

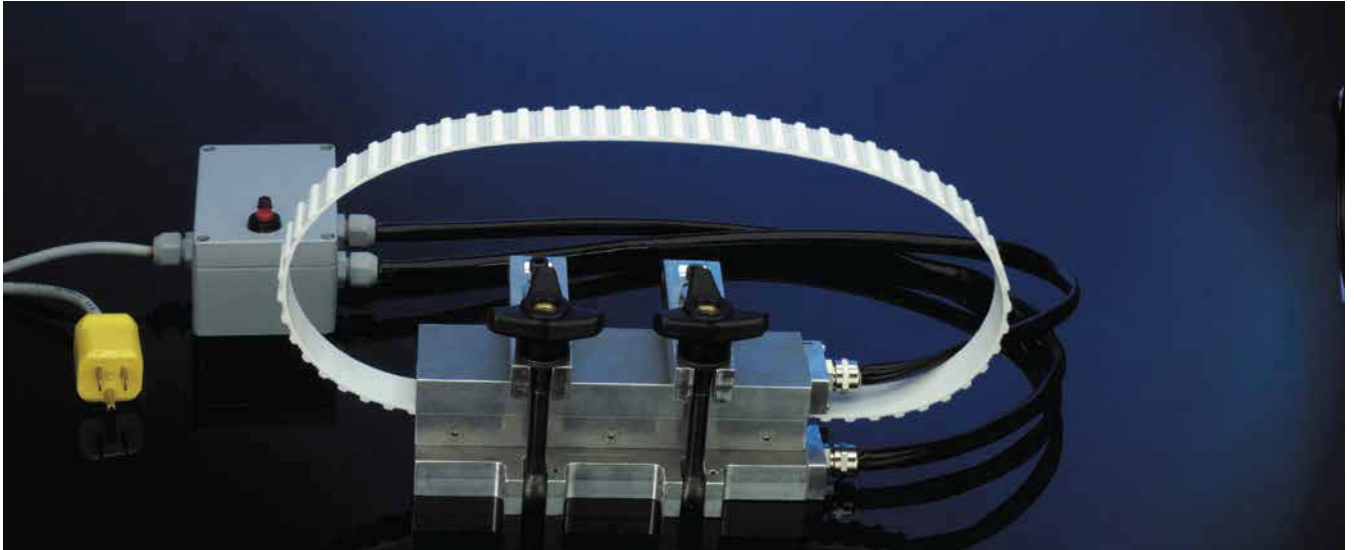
Connecting Timing Belts - Solutions for Field Installation

BRECOflex CO., L.L.C. offers three different technologies for installation of conveyor belts with prepared ends. No time consuming equipment tear down is required when using the following technologies:

1. Field Welder - a self contained heat welding press
2. Belt Lock - mechanical connection kit comprised of plates and inserts to join AT10/T10 belts
3. Connecting Kit - mechanical connection kit comprised of plates and inserts to fasten ATN belts
4. PinLock - mechanical connection kit comprised of lateral screws through the teeth

A comparison chart of the four technologies can be found on page six.

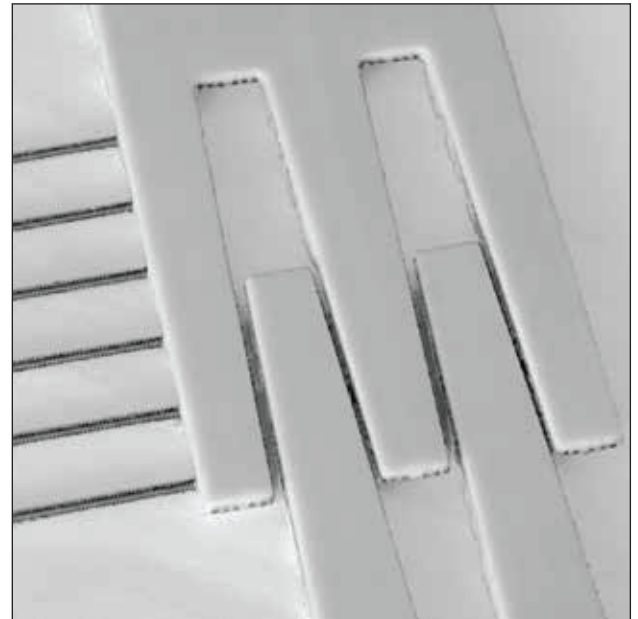
Field Welder



Connecting Kit/Timing Belt Lock



PinLock



Connecting Timing Belts - Solutions for Field Installation

1. Field Welder:

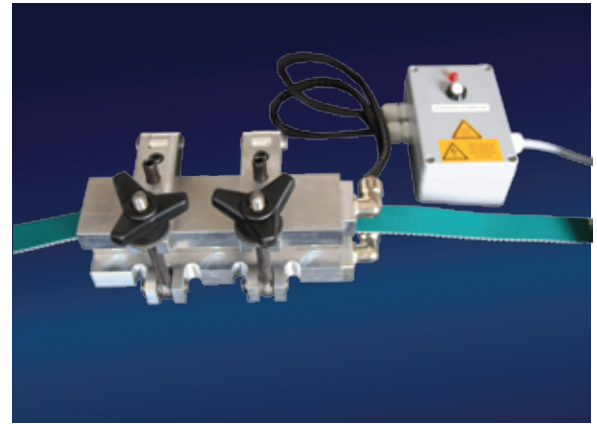
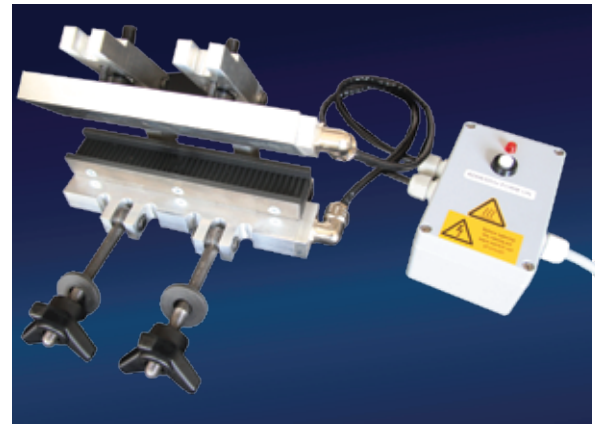
BRECOflex CO., L.L.C. offers Field Welders for installation and replacement of endless polyurethane timing belts in machinery and equipment on location.

Purchase prepared belting from BRECOflex CO., L.L.C. already die cut to length with the appropriate finger pattern and weld on site.

- No costly machine disassembly necessary.
- Minimize down time - replacement time 30-45 minutes.
- Only 120V or 240V 60 Hz required (no water cooling).
- Tensile strength of the field welded belt equals factory weld strength.
- Available for all standard pitches, including ATN, HTD, self-tracking, and double sided belts.
- Available in widths from 12 mm to 150 mm. Various widths can be welded by using filler material or a tooth plate set for each belt pitch / width. Lengths over 900mm.
- Custom top plates can accommodate profiles and many backing materials (contact Applications Engineering for details).

Ordering Examples (belt):

- 50 T10/1000 FW
Belt ends prepared for field welding



2. Timing Belt Lock - AT10 / T10

BRECOflex CO., L.L.C. offers a mechanical timing belt connection technology for T10 and AT10 pitch timing belts in conveyor applications.

The Timing Belt Locks are compatible with standard AT10 and T10 belts and pulleys for direct replacement. Timing Belt Locks are available in widths of 32, 50, 75, and 100mm.

- Designed for rapid belt assembly on the machinery using just a screw driver.
- Belt ends are factory machined to accept hardware consisting of 10 connecting plates, 10 tooth inserts, and the requisite screws.
- Spare parts kits are available to change out the inserts in applications with frequent reassembly.



Ordering Examples (belt):

- 75 T10 DC/8400 DC
Belt ends prepared for timing belt lock (Kit included, not installed)
- 75 T10 DC Timing Belt Lock Kit
Belt lock kit includes connection plates, tooth inserts, and requisite screws

Connecting Timing Belts - Solutions for Field Installation

3. ATN – Connecting Kit for Field Assembly

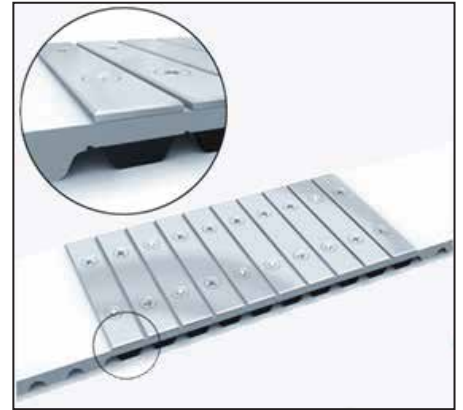
(See B209 catalog for ATN product details)

BRECOflex CO., L.L.C. offers mechanical ATN Connecting Kits for rapid belt assembly and disassembly in the field directly on the conveyor system.

- Mechanical hardware connection to clamp together finger stamped belt ends.
- Hardware consists of high strength inserts, steel top plates, and the requisite screws.
- Connection technology has option to allow ATN profiles to attach in joined area.

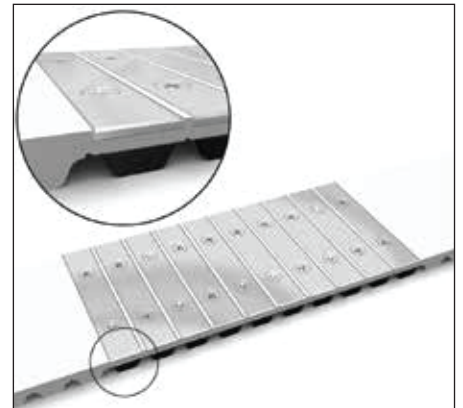
Version “C” (standard)

- Available for pitches ATN10, ATN12.7, ATN10 K6, and ATN12.7 K6.
- Belt thickness = 4.5 mm, without any self-tracking guide.
- Number of connection elements = 10.
- Not suitable for mounting profiles in connecting kit area.
- Threaded hole size = M2.5.
- Top plates are 0.9mm above the belt back.



Version “DC” (deep connection – recessed top plates)

- Use when product must lay flat across the connecting kit area.
- Available for pitches ATN10, ATN12.7, ATN20, ATN10 K6, and ATN12.7 K6.
- Belt thickness = 5.4 mm (ATN10, ATN12.7) and 8.0 mm (ATN20), without any self-tracking guide.
- Number of connection elements = 10 (ATN10, ATN12.7) and 9 (ATN20).
- Threaded hole size = M2.5 (ATN10, ATN12.7) and M3 (ATN20).



Version “DC-PRO” (deep connection and profiles)

- A version of the flush connecting kit DC above but additionally suitable for mounting up to 5 profiles in connecting kit area.
- Available for pitches ATN10, ATN12.7, ATN20, ATN10 K6, and ATN12.7 K6.
- Belt pitches, thickness, number of connection elements, and threaded hole sizes comparable to version “DC”.



Ordering Examples (belt):

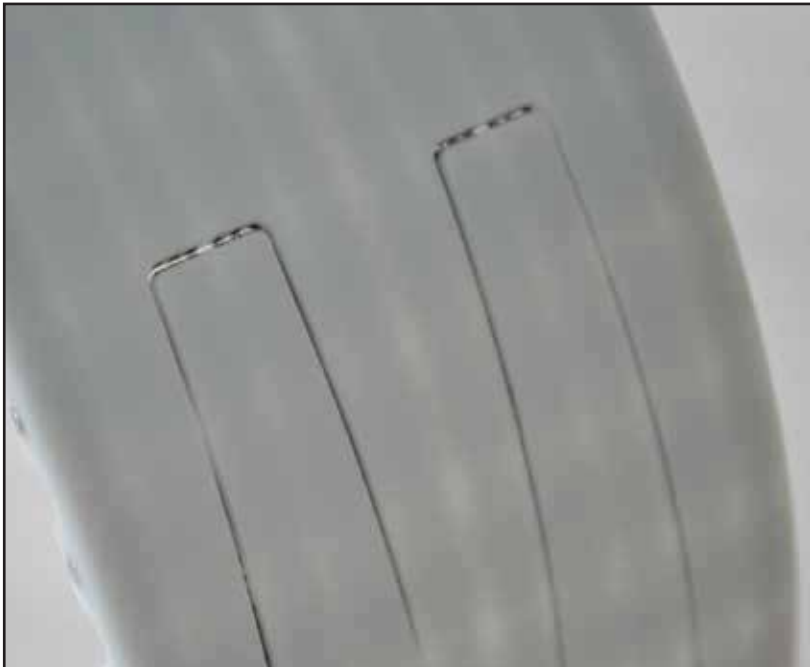
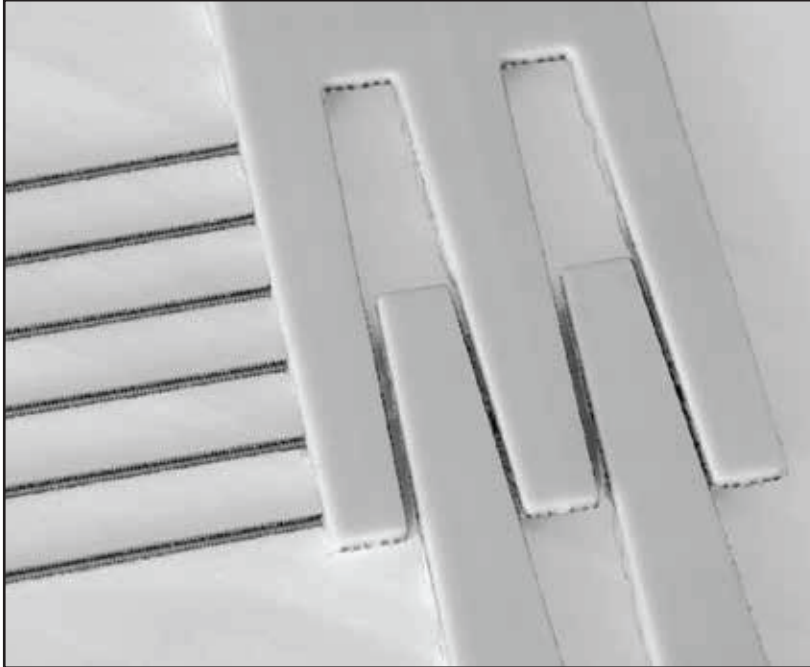
- 50 ATN10/1000 C
*Belt prepared for connecting kit
(Kit included, not installed)*
- 50 ATN10 DC/1000 DC
*Belt prepared for connecting kit
(Kit included, not installed)*
- 50 ATN10 DC – ATN Connecting Kit Spare Parts Kit
(Spare parts include connection plates, tooth inserts, and requisite screws)

Connecting Timing Belts - Solutions for Field Installation

4. PinLock - Connecting Kit for Field Assembly

BRECOflex CO., L.L.C. offers mechanical Pinlock Connecting Kits for rapid belt assembly and disassembly in the field directly on the conveyor system.

- Precise water jet-cut finger pattern
- Hardware consists of stainless threaded pins
- Connection may be assembled/disassembled several times
- Possible with back covers or profiles
- Available with 6 pins (PL6) or 10 pins (PL10)



Connecting Timing Belts - Solutions for Field Installation

Maximum Allowable Tensile Strength Chart (N)								
	Width (mm)	T10	T20	AT10	AT20	ATN10 ATN10K6	ATN12.7 ATN12.7K6	ATN20
C	25	-	-	-	-	-	-	-
DC	25	-	-	-	-	-	-	-
DC-PRO	25	-	-	-	-	-	-	-
FW	25	1100	1750	2125	-	1000	1000	1350
PL6	25	-	400	200	500	-	-	-
PL10	25	300	700	400	1000	-	-	-
C	32	-	-	-	-	-	-	-
DC	32	550	-	550	-	-	-	-
DC-PRO	32	-	-	-	-	-	-	-
FW	32	1408	2240	2720	3400	1280	1280	1728
PL6	32	-	500	300	600	-	-	-
PL10	32	400	900	500	1200	-	-	-
C	50	-	-	-	-	750	750	-
DC	50	750	-	750	-	750	750	750
DC-PRO	50	-	-	-	-	750	750	750
FW	50	2200	3500	4250	5330	2000	2000	2700
PL6	50	-	800	400	1000	-	-	-
PL10	50	600	1500	800	2000	-	-	-
C	75	-	-	-	-	1150	1150	-
DC	75	1000	-	1000	-	1150	1150	1150
DC-PRO	75	-	-	-	-	1150	1150	1150
FW	75	3300	5250	6375	8000	3000	3000	4050
PL6	75	-	1200	600	1500	-	-	-
PL10	75	900	2200	1200	3000	-	-	-
C	100	-	-	-	-	1500	1500	1500
DC	100	1500	-	1500	-	1500	1500	1500
DC-PRO	100	-	-	-	-	1500	1500	1500
FW	100	400	7000	8500	10660	4000	4000	5400
PL6	100	-	1600	800	2000	-	-	-
PL10	100	1200	3000	1600	4000	-	-	-

Note: Field welded belts (FW) are available for all belt pitches and in-between widths. For a complete list of strength numbers please see the polyurethane timing belt specification charts in catalog B212. Additional pitches are possible with PinLock such as self-tracking versions.

Field Connection Technologies - Comparison

	Availability of product range	Strength	Short belt length possible	Available Widths	Low initial Cost	Low recurring cost	Suitable for multiple plant locations	Suitable for reassembly	Ease of assembly and disassembly	Use with profiles (in connection area)	Use with backings
C	*	*	**	*	**	**	***	***	**	-	-
DC	*	*	**	*	**	**	***	***	**	-	-
DC-PRO	*	*	**	*	**	**	***	***	**	***	-
FW	***	***	**	***	*	***	-	-	*	**	**
PL	**	*	**	*	**	**	***	***	**	-	**

Legend: ***Most **Suitable *Acceptable - Not applicable

