

- **Particularly low pressure loss**
- **Pulse generation at extremely low flow rates**
- **Accepts short duration loads at any pressure**
- **For horizontal installation**



Contact-type water meters serve for volumetric measurement of flow amounts, and to control proportional metering systems. They are intended for horizontal installation in piping systems, and are suitable for registering the slightest amounts of water drawn. The contact water meters detailed below are notable for their excellent measurement service life even under extreme stresses tending to Q_{max} and Q_{min} , as well as through a low pressure loss. Each contact-type water meter is designed for

a minimum permissible operation pressure of PN 10 according to German DIN 2401. On special request, the contact water meter can be supplied in hot-water or VE water versions. The max. permissible contact load is 24 V (protective low voltage) and 0.2 A. Contact water meters are generally fitted with a roller-type counting mechanism.



Technical Data:

Contact Water Meter DN 20 - 40

Nominal width	DN mm/inch	20/G ³ / ₄	25/G 1	40/G1 ¹ / ₂
Rated flow new designation	Q _n m ³ /h	2.5	6	10
Flow with 1 bar pressure loss	m ³ /h	7	12	24
Maximum flow	Q _{max} m ³ /h	5	12	20
Separating limit	Q _t l/h	250	500	1000
Lower measuring range limit	Q _{min} l/h	30	70	100

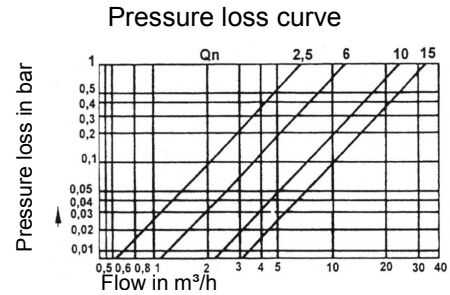
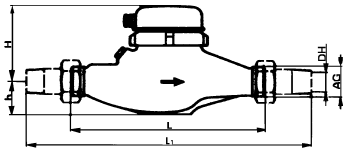
Contact Water Meter DN 50, DN 80 (flange version)

Nominal width	DN mm	50	80
Rated flow	Q _n m ³ /h	15	40
Flow with 0.1 bar pressure loss	m ³ /h	34	44
Maximum flow (short term)	Q _{max} m ³ /h	30	110
Separating limit	Q _t m ³ /h	1.5	6
Lower measuring range limit	Q _{min} m ³ /h	0.1	0.8

Further pulse sequences available on request!

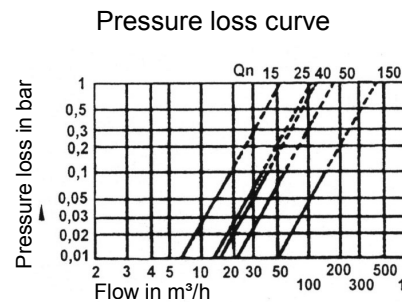
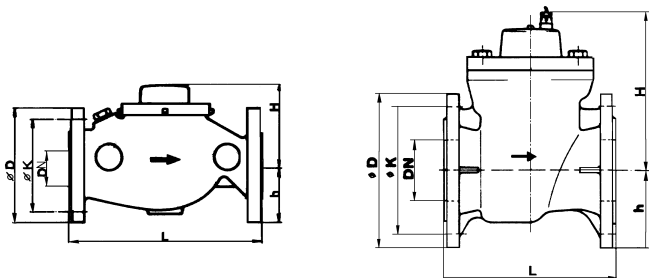
Dimensions:

DN 20-50



Nominal width	DN mm	20	25	40
Connecting thread on meter	AG inch	G 1 B	G 1 ¹ / ₄ B	G 2 B
Connecting thread on union	inch	G 3/4	G 1	G 1 ¹ / ₂
Overall length	L mm	190	260	300
(with threaded union)	L ₁ mm	288	378	438
Height	H mm	110	115	133
	h mm	41	44	46
Width	A mm			
	B mm	96	104	136
Weight without threaded union	kg	1.8	2.8	5.4
Weight with threaded union	kg	2.2	3.4	6.6

DN 50, DN 80



Nominal width	DN mm	50	80
Ext. Ø flange connection	D mm	165	200
Hole circle Ø	K mm	125	160
DIN 2501 / PN 16 no. of screws each.		4	8 (4)
Height	H mm	150	221
	h mm	83	102
Length as per DIN 19625	L mm	270	300
Weight	kg	12.4	25.5

Ordering Data:

Article	Material No.
Contact water meter	
DN 20 , $Q_n = 2.5 \text{ m}^3/\text{h}$, pulse interval: 1 l/pulse, 130 mm face-to-face length, electric connection: terminal	419901041
DN 20 , $Q_n = 2.5 \text{ m}^3/\text{h}$, pulse interval: 1 l/pulse, 190 mm face-to-face length, electric connection: terminal	419901236
DN 20 , $Q_n = 2.5 \text{ m}^3/\text{h}$, pulse interval: 1 l/pulse, 190 mm face-to-face length, electric connection: terminal, with injection hole	419901201
DN 25 , $Q_n = 6 \text{ m}^3/\text{h}$, pulse interval: 1 l/pulse, 260 mm face-to-face length, electric connection: terminal	419901237
DN 40 , $Q_n = 10 \text{ m}^3/\text{h}$, pulse interval: 2 l/pulse, 300 mm face-to-face length, electric connection: terminal	419901238
DN 50 (flange version) , $Q_n = 15 \text{ m}^3/\text{h}$, pulse interval: 2.5 l/pulse, 270 mm face-to-face length, electric connection: terminal	419901222
DN 80 (flange version) , $Q_n = 40 \text{ m}^3/\text{h}$, pulse interval: 10 l/pulse, 300 mm face-to-face length, electric connection: terminal	419901231

Other pulse versions on request!

Special versions of contact water meters

Article	Material No.
Ultrasonic flow meters with special pulse sequences or hot water version:	
DN 20 , $Q_n = 2.5 \text{ m}^3/\text{h}$, pulse interval: 0.1 l/pulse, 190 mm face-to-face length, electric connection: fixed cable 2.5 m, temperature up to 90 °C	419901050
DN 20 , $Q_n = 2.5 \text{ m}^3/\text{h}$, pulse interval: 0.15 l/pulse, 190 mm face-to-face length, electric connection: fixed cable 2.5 m, temperature up to 90 °C	419901051
DN 20 , $Q_n = 2.5 \text{ m}^3/\text{h}$, pulse interval: 0.5 l/pulse, 130 mm face-to-face length, electric connection: fixed cable 2.5 m, temperature up to 90 °C	419901052
Contact water meter hot water version:	
DN 20 , $Q_n = 2.5 \text{ m}^3/\text{h}$, pulse interval: 1 l/pulse, 190 mm face-to-face length, electric connection: terminal, temperature up to 120 °C	419901044
Contact water meter with internal coating (for demineralised water):	
DN 20 , $Q_n = 2.5 \text{ m}^3/\text{h}$, pulse interval: 1 l/pulse, 190 mm face-to-face length, internal coating: PTFE, electric connection: fixed cable 2.5 m	419901243
Contact water meter riser tube version:	
DN 20 , $Q_n = 2.5 \text{ m}^3/\text{h}$, pulse interval: 0.25 l/pulse, 190 mm face-to-face length, electric connection: terminal, riser tube version	419901039

Accessories:

Article

Material No.



Water meter screw connection

Material: brass

for contact water meter	DN 20 (G 1 _i – G 3/4 _a)	415506343
	DN 25 (G 1 1/4 _i – G 1 _a)	415506344
	DN 40 (G 2 _i – G 1 1/2 _a)	415506349

2 pieces required in each case
or 1 piece in connection with:



Water meter screw connection

with G 1/4 hole for metering valve

Material: brass

for contact water meter	DN 20 (G 1 _i – G 3/4 _a)	415506331
	DN 25 (G 1 1/4 _i – G 1 _a)	415506332
	DN 40 (G 2 _i – G 1 1/2 _a)	415506334

Water meter screw connection nickel electroplated

Material: brass with protective nickel layer (inside and outside)

for contact water meter	DN 20 (G 1 _i – G 3/4 _a)	415506353
	DN 25 (G 1 1/4 _i – G 1 _a)	415506354
for contact water meter	DN 20 (G 1 _i – G 3/4 _a)	415506336
	with G 1/4 hole for metering valve	

Connection cable for electrical metering pumps

- PVC-lead (grey), protection class IP 67, completely premade for connection to ELADOS EMP II / III, 5 m length, with 4-pin pulse input plug 418439002
- Flexible control lead LIYY 2 x 0.5 mm² (grey) 418435301