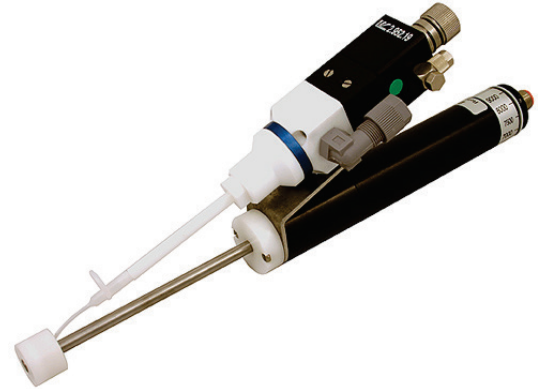


- **Rotary spray gun for stationary use and circular dispensing of products into bores from Ø 8 mm**
- **Non contact application**
- **To be used mainly in combination with EP series metering valves**
- **Especially suitable for lubricants and anaerobic adhesives**
- **Not to be used for cyanoacrylates and solvent-containing adhesives**



The rotary gun is needed to dispense products into bores with a diameter ranging from 8 to 100 mm. It is vital to position the work piece onto which a product is dispensed exactly, especially when dealing with small bores.

The dispensing procedure is as follows:

The product (mixed adhesives, oils or other liquids) is delivered into the rotor head via a metering valve. Owing to the special construction and the rotation of the rotor head, product dispensing to the bore occurs in the form of a circle.

The rotor shaft has two bearings and is driven by a DC motor via a flexible coupling. The motor is equipped with an ironless rotor with self-contained helical winding; it has a linear rotational speed and a speed-torque curve.

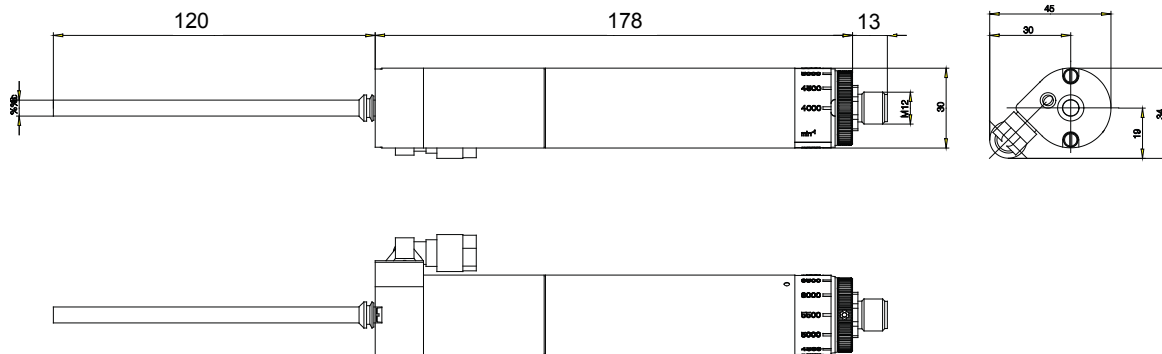
The required rotational speed adjustment is carried out through an adjustment ring at the bottom of the rotor spray. The power- and signal supply is effected by a 8-pin plug-in connector, provided directly from the customer's control system.

The rotational speed is adjustable between 4000 and 9000 1/min with intervals of 500 1/min.

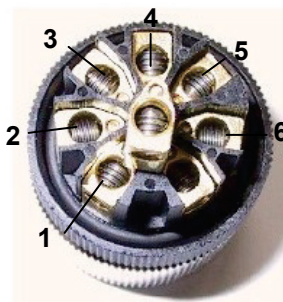
**Technical data:**

Power supply	24 V/DC
Electrical connection	8-pin plug-in connector
Product connection	hose connection for hoses Ø 4/6 mm
Rotation speed setting range	4000 - 9000 1/min
Weight	0.4 kg
Ambient temperature	+10 - +40° C
Safety type	IP 55

**Dimensions:**



**Pin configuration of connector plugs:**



- |           |                          |
|-----------|--------------------------|
| (1) brown | 24 V DC                  |
| (2) white | Start                    |
| (3) blue  | 0 V DC                   |
| (4) black | ok/nok-Signal            |
| (5)       | Current limitation       |
| (6)       | Start-up time limitation |

**Ordering data:**

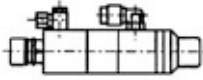
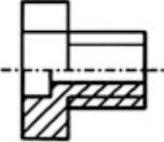
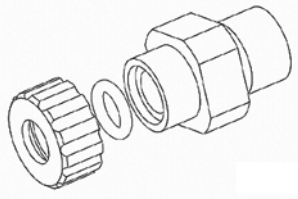



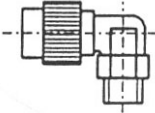
**Article/Nomenclature**

**Material no.**

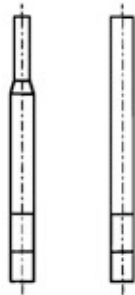
Rotary spray  
 $\varnothing$  30 mm, with integrated rotation speed control

295056

**Accessories:**

	<b>Article/Nomenclature</b>	<b>Material no.</b>
	Metering valve EP series	
	Adaptor for metering tips	39520723
	Adaptor for metering tip extension consisting of: Adaptor with clamping M10 Union nut M10x1 Precision O-ring (FPM 602)	295253
	Metering tip extension Metering tip extension, Luer-Lock material: Delrin (can be shortened if necessary)	39501117 295047
	Metering tip, size 0 Metering tip, size 0.5 Metering tip, size 1.0 Metering tip, size 1.0, Luer-Lock Metering tip, size 1.5	415701145 1...5232 415701147 415701148 295250
	Angled support with cover for attachment of an EP series metering valve	295038
	Angled screw connection R 1/8" PVDF for product line Ø 4/6 mm for product line Ø 6/8 mm	415101810 415101809
	Circular connector 8-pole RKC 8/9, straight version	418463151
	Circular connector 8-pole RKCW 8/9, offset version	418463152
	Twist protection, black	39505514

**Accessories:**



**Article/Nomenclature**

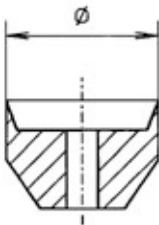
**Material no.**

Rotor shaft Ø 2 mm

39505516

Rotor shaft Ø 3 mm

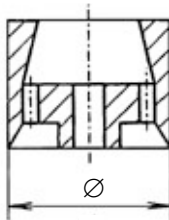
39505517



**Rotor heads with rear rotor edge**

- Rotor head 6 mm Ø, shaft 2 mm Ø
- Rotor head 7 mm Ø, shaft 2 mm Ø
- Rotor head 8 mm Ø, shaft 2 mm Ø
- Rotor head 9 mm Ø, shaft 3 mm Ø
- Rotor head 10 mm Ø, shaft 3 mm Ø
- Rotor head 11 mm Ø, shaft 3 mm Ø
- Rotor head 12 mm Ø, shaft 3 mm Ø

- 39502001
- 39502002
- 39502003
- 39502004
- 39502005
- 39502006
- 39502007



**Rotor heads with front rotor edge**

- Rotor head 9 mm Ø, shaft 2 mm Ø
- Rotor head 10 mm Ø, shaft 2 mm Ø
- Rotor head 12 mm Ø, shaft 3 mm Ø
- Rotor head 14 mm Ø, shaft 3 mm Ø
- Rotor head 16 mm Ø, shaft 3 mm Ø
- Rotor head 18 mm Ø, shaft 6 mm Ø
- Rotor head 20 mm Ø, shaft 6 mm Ø
- Rotor head 22 mm Ø, shaft 6 mm Ø
- Rotor head 24 mm Ø, shaft 6 mm Ø
- Rotor head 28 mm Ø, shaft 6 mm Ø
- Rotor head 32 mm Ø, shaft 6 mm Ø
- Rotor head 36 mm Ø, shaft 6 mm Ø
- Rotor head 40 mm Ø, shaft 6 mm Ø

- 39502022
- 39502019
- 39502023
- 39502008
- 39502009
- 39502010
- 39502011
- 39502018
- 39502012
- 39502013
- 39502014
- 39502015
- 39502017



Product hose  
Ø 4/6 mm, material: PE

417400301

Product hose  
Ø 4/6 mm, material: PTFE

417400215

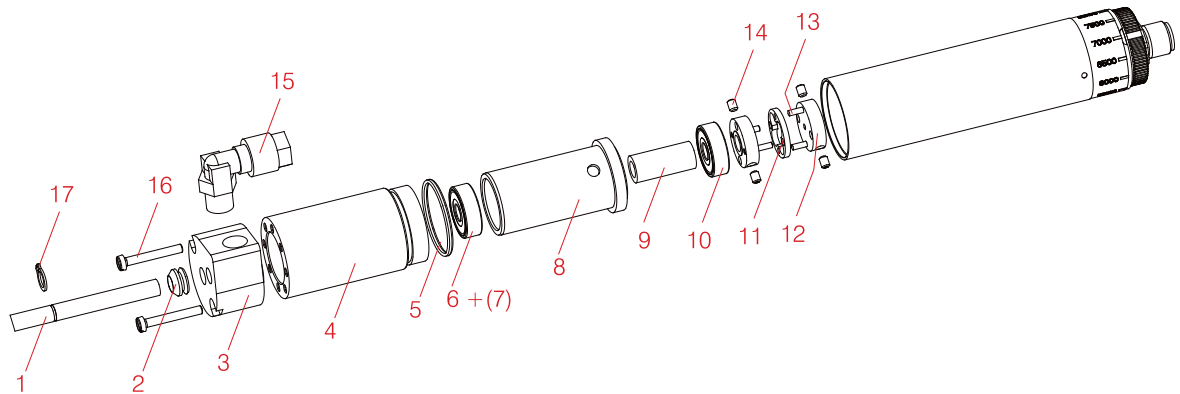
Product hose  
Ø 6/8 mm, material: PE

417400310

Product hose  
Ø 6/8 mm, material: PTFE

417400224

**Spare parts:**



Item	Article	Material No.
1	Rotorspray integra standard rotor shaft	39505504
2	V-ring V-6S 5 X 2 X 5.2 NBR	417008404
3	Head piece	39503704
4	Rotorspray integra bearing housing Al black	39505501
5	Precision O-ring 24.8 X 1.5 70 NBR BUNA	417002241
6	Deep groove ball bearing AD 19 x ID 6 x 6 pres.	414000009
7	Labyrinth covering plate for ball bearings	414000013
8	Rotorspray integra bearing receiver sleeve Ms	39505502
9	Rotorspray integra bearing spacer Ms	39505505
10	Rotorspray integra coupling claw shaft Al	39505507
11	Rotorspray integra coupling elastic part POM	39505508
12	Rotorspray integra MID coupling claw motor Al	39505506
13	Set pin DIN7 A2 2x10	413612107
14	Set screw with I.6KT M3 x 4 DIN 913 V2A	413405012
15	Screw-in offset 1/8" 6 X 4 PA	415101807
16	Cap screw M3X22 DIN84 ISO1207 V2A	413018263
17	Circlip D.6/ID.5.6 DIN471	413780004