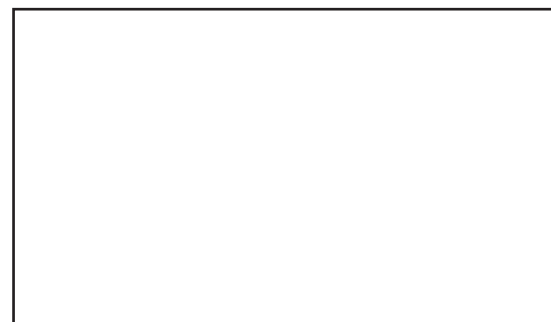
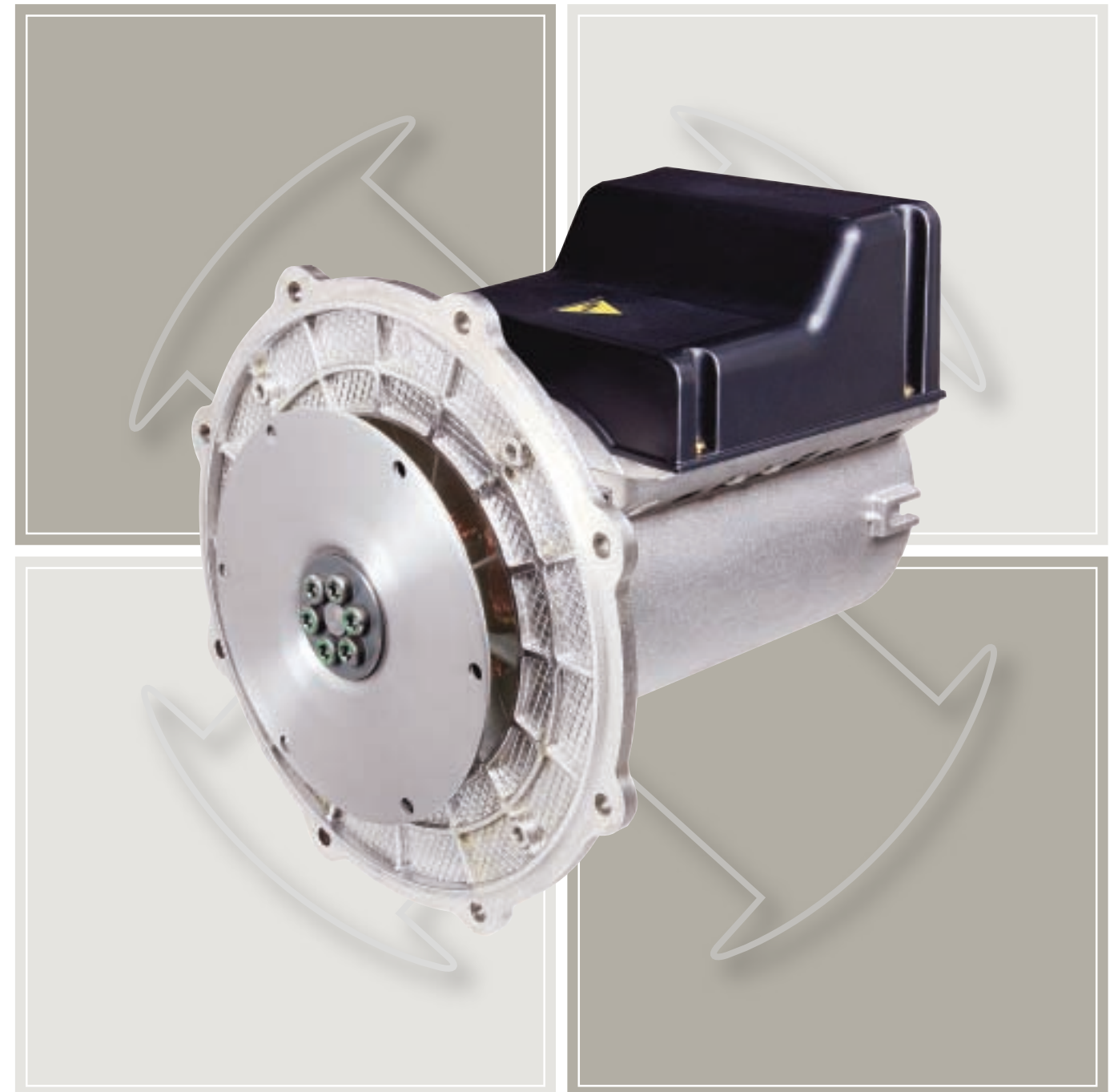




3964 en - 04.2006 / c



MOTEURS LEROY-SOMER 16015 ANGOULÊME CEDEX - FRANCE

338 567 258 RCS ANGOULÊME
S.A. au capital de 62 779 000 €

www.leroy-somer.com

ALTERNATOR

LSA 36 - Single phase - 4 pole

SPECIALLY ADAPTED FOR APPLICATIONS :

The LSA 36 4P alternator is designed to be suitable for typical generator applications and is particularly adapted to lighting towers.

COMPLIANT WITH INTERNATIONAL STANDARDS :

The LSA 36 4P alternator conforms to the main international standards and regulations IEC, NF, CSA, NEMA, VDE, BS, UL1446 (insulation system). It can be integrated into a CE marked generator set.

TOP OF THE RANGE ELECTRICAL PERFORMANCES :

- Insulation class H.
- Reconnectable alternator : series/parallel.
- Voltage range: 115/230V 50Hz and 120/240V 60Hz.
- 50Hz and 60Hz models.
- Short circuit current : 4 times nominal current.
- The recovery time is of less than 0.1s when the full load is applied at the nominal voltage.
- The permissible overload is 6.5 kVA during 30 minutes.
- Under speed protection.
- Radio interference within the tolerance as standard.

EXCITATION AND REGULATION SYSTEM :

The LSA 36 4P has a brushless compound excitation using an auxiliary phase capacitor to provide the self excitation (ACC). These units offer high reliability due to their simple design and do not require maintenance.

The voltage regulation at constant speed is +/-5%.

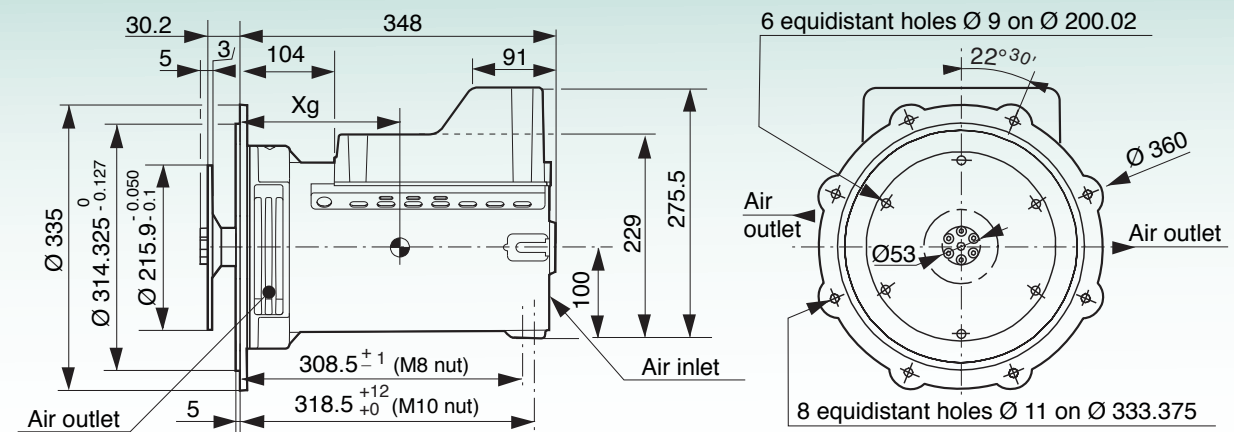
MECHANICAL CHARACTERISTICS :

- Monobloc housing in aluminium giving a high rigidity and short length .
- IP23 protection.
- Twin-bearing and single-bearing versions designed to suit most engines on the market.
- Sealed for life bearings.
- Maximum overspeed : 2160rpm.

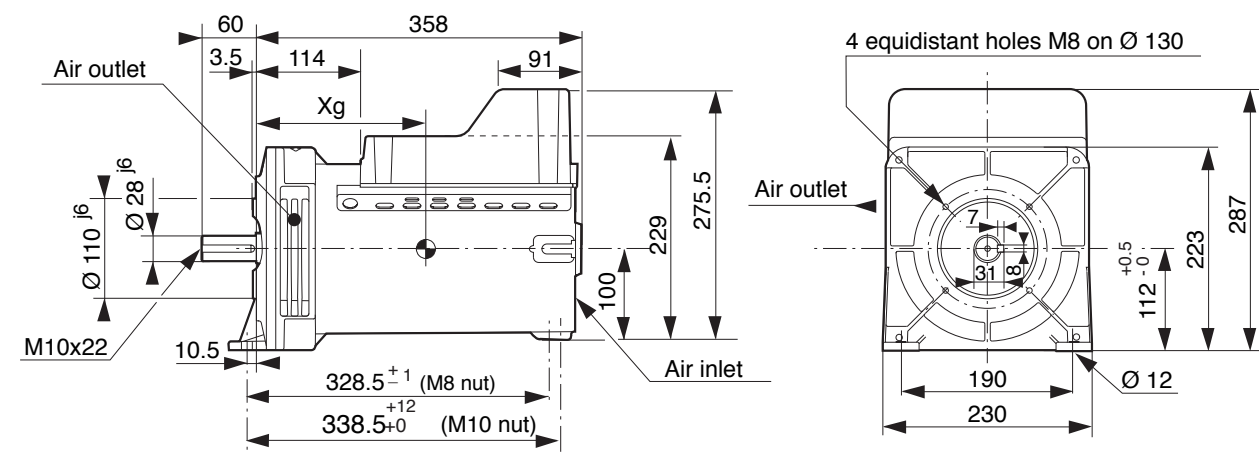
MODULAR TERMINAL BOX :

- Easy access to power terminals
- Standard configuration with blank removable plate.

Single bearing with disc - IM 1201 - SAE 5 - 6^{1/2}



Two bearing - IM 1001 (B3 or B14)



Power rating 1500 rpm - 50 Hz - 115 / 230V - P. F. = 1

Type	kW / kVA	Regulation (voltage) (1)	Efficiency 4/4 of load (2)	Air flow m ³ /h
LSA 36 L12 A1/4	5	+/- 5 %	74 %	140

Power rating 1800 rpm - 60 Hz - 120 / 240V - P. F. = 1

Type	kW / kVA	Regulation (voltage) (1)	Efficiency 4/4 of load (2)	Air flow m ³ /h
LSA 36 L12 A1/4	6	+/- 5 %	76 %	168

Dimensions / Weight - Single bearing with disc - IM 1201

Type	Weight (kg)	Xg (mm)	J (kg.m ²)
LSA 36 L12 A1/4	37	191	0.01247

Dimensions / Weight - Two bearing - IM 1001

Type	Weight (kg)	Xg (mm)	J (kg.m ²)
LSA 36 L12 A1/4	36	205	0.00955

(1) Voltage regulation when cold at rated speed.
(2) Efficiency when cold at rated speed.