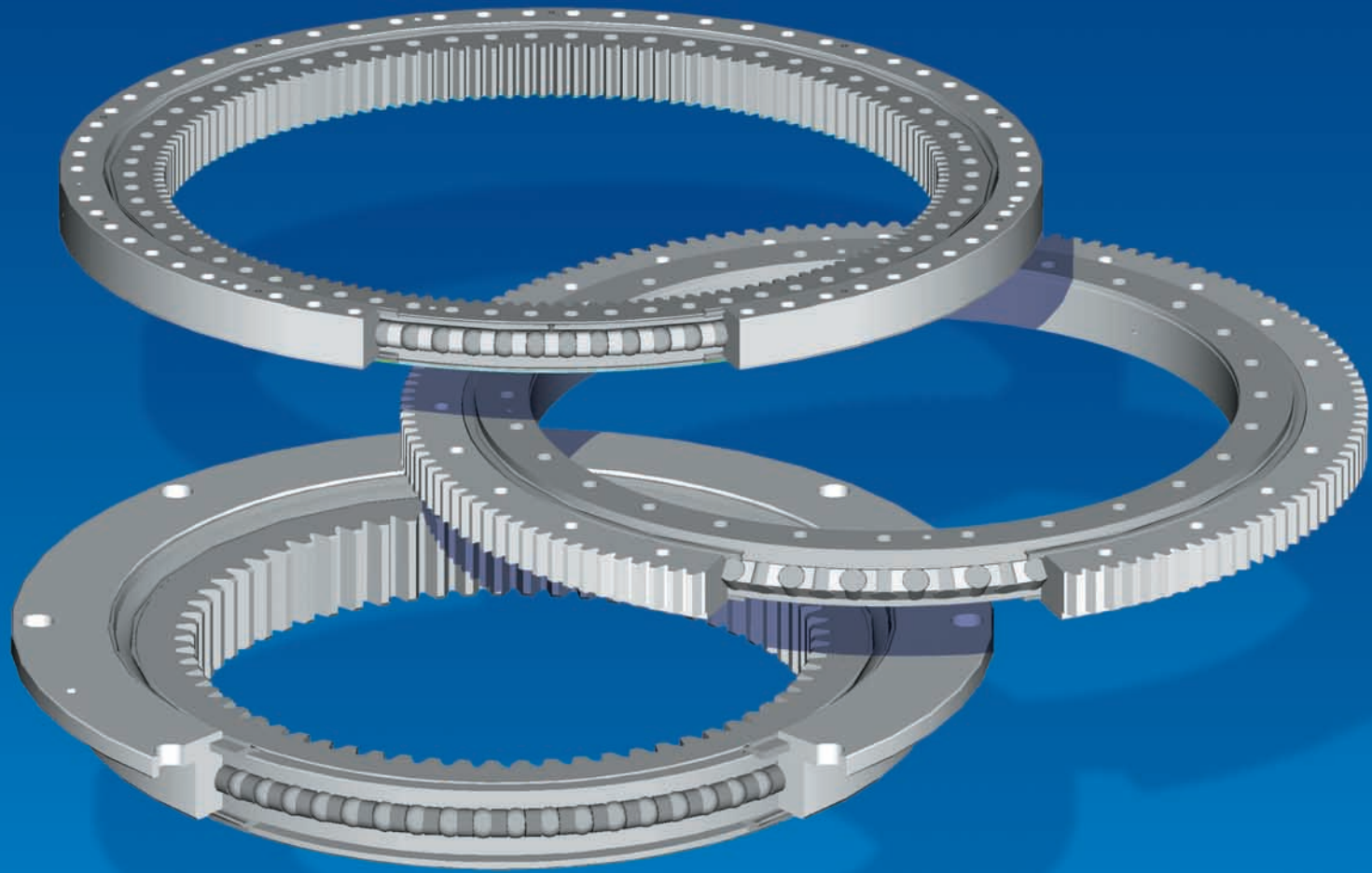


SKF

SKF slewing bearings stock range



SKF slewing bearings stock range

**Recommended range
from 414 mm to 1904 mm**

- ball design
- roller design

1

L-shape range

- ball design

2

Other standard items

- ball design
- roller design

3

Four point contact slewing bearings with external gear teeth

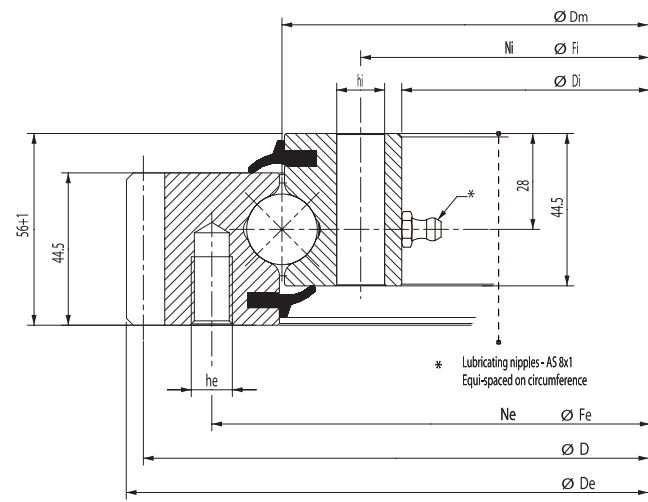


Figure A

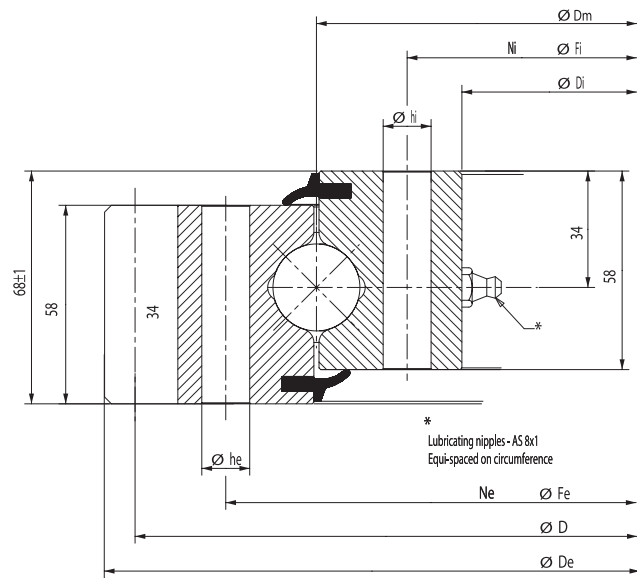
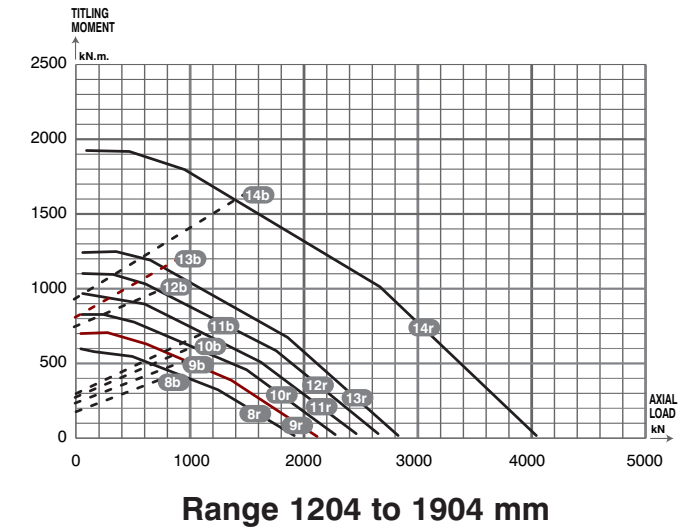
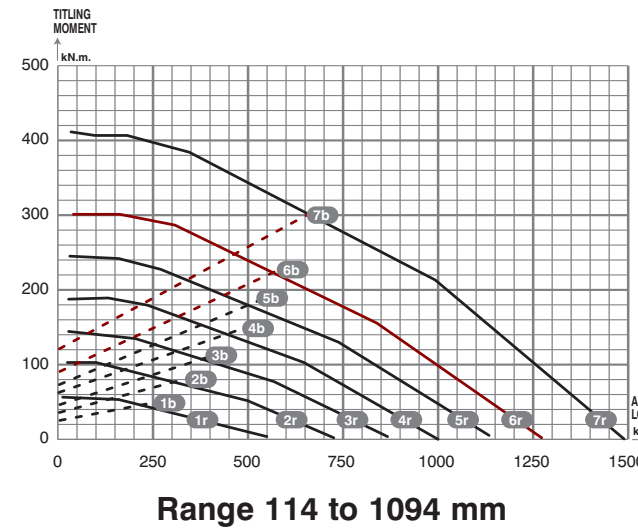


Figure B

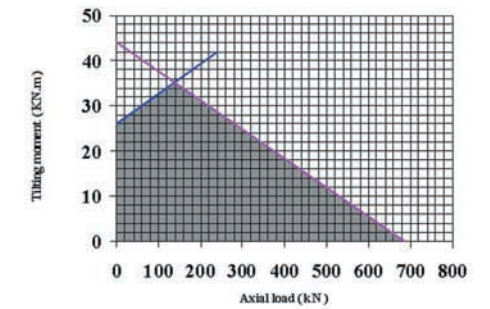
Static limited load curves for raceway ——— 1r to 14r
 Static limited load curves for bolting - - - - - 1b to 14b



How to use the limit curve

- Select for one bearing the associated load curve
- The solid line shows the utilization limit curve for the raceways
- The stippled line shows the utilization limit curve for the bolting

* Item number of the relevant curve in the static limited load graph for raceway and bolting



Main dimensions				Fixing holes				Gear teeth				Tooth force		Mass	Sktech	Basic load rating		curves*		Designation
De	Dm	Di	Fe	he	Ne	Fi	hi	Ni	D	m	Z	Norm. Tooth	Max. Tooth force		Fig N°	axial dyn. C	axial stat. Co	raceways (r)	bolt (b)	
mm				mm				kN		Kg		kN								
503,3	414	342	455	M12	20	368	14	24	495	5	99	17	31	31	A	169	560	1r	1b	RKS.061.20.0414
640,3	544	472	585	M12	28	498	14	32	630	6	105	23	42	43	A	188	740	2r	2b	RKS.061.20.0544
742,3	644	572	685	M12	32	598	14	36	732	6	122	23	42	52	A	200	880	3r	3b	RKS.061.20.0644
838,1	744	672	785	M12	36	698	14	40	828	6	138	23	42	59	A	211	1010	4r	4b	RKS.061.20.0744
950,1	844	772	885	M12	36	798	14	40	936	8	117	32	57	71	A	222	1150	5r	5b	RKS.061.20.0844
1046,1	944	872	985	M12	40	898	14	44	1032	8	129	32	57	77	A	231	1280	6r	6b	RKS.061.20.0944
1198,1	1094	1022	1135	M12	44	1048	14	48	1184	8	148	32	57	91	A	244	1490	7r	7b	RKS.061.20.1094
1338	1204	1119	1257	16	45	1151	16	45	1310	10	131	49	88	135	B	371	1943	8r	8b	RKS.061.25.1204
1448	1314	1229	1367	16	50	1261	16	50	1420	10	142	49	88	147	B	383	2124	9r	9b	RKS.061.25.1314
1558	1424	1339	1477	16	54	1371	16	54	1530	10	153	49	88	159	B	395	2304	10r	10b	RKS.061.25.1424
1668	1534	1449	1587	16	60	1481	16	60	1640	10	164	49	88	171	B	406	2485	11r	11b	RKS.061.25.1534
1791	1644	1536	1708	22	54	1580	22	54	1760	10	176	49	88	211	B	416	2666	12r	12b	RKS.061.25.1644
1901	1754	1646	1818	22	60	1690	22	60	1870	10	187	49	88	225	B	424	2847	13r	13b	RKS.061.25.1754
2073,4	1904	1796	1968	22	64	1840	22	64	2030	14	145	69	124	270	B	571	4048	14r	14b	RKS.061.30.1904

Gear not hardened
 Bearings delivered without centering
 Bearings are not delivered full of grease and consequently must be fully relubricated with SKF LGEP2 or equivalent before the machine is running.
 Material : C 45E => curves N° 1 to 7 - 42 Cr Mo4 => curves N° 8 to 14

Four point contact slewing bearings with internal gear teeth

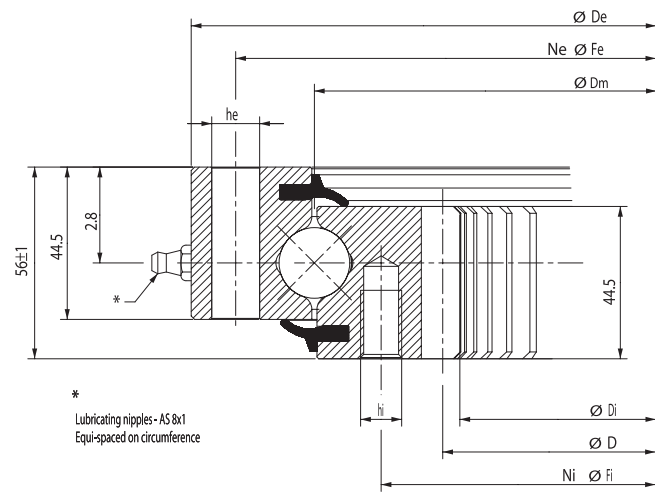


Figure C

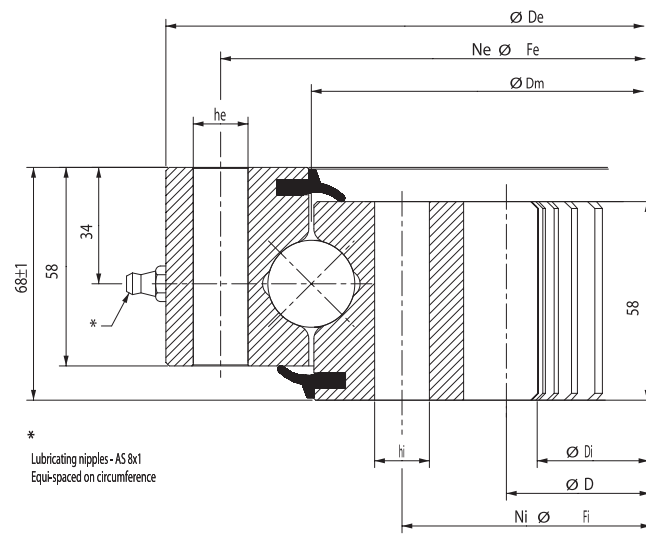
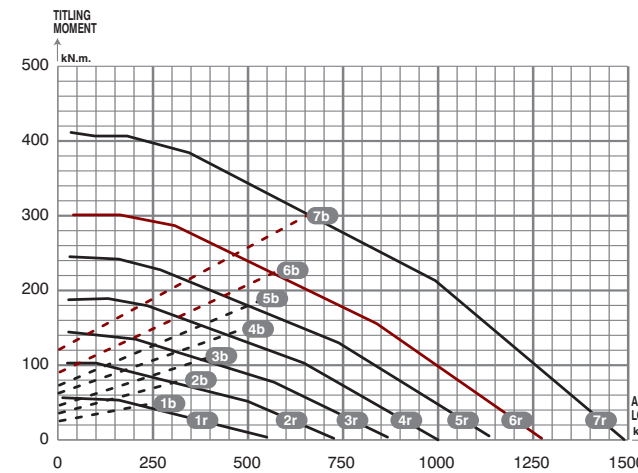
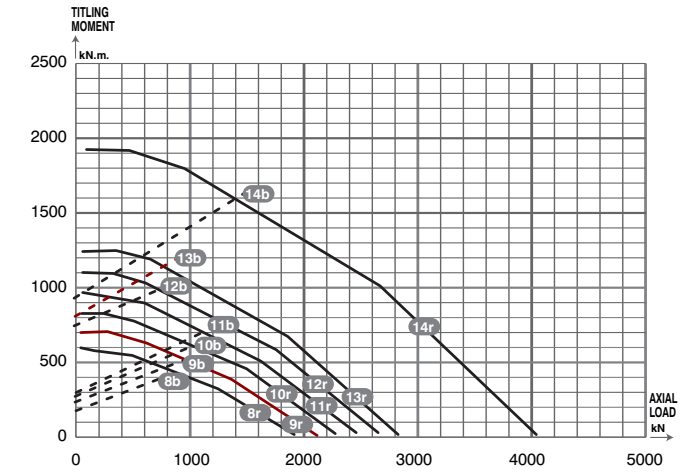


Figure D

Static limited load curves for raceway ——— 1r to 14r
 Static limited load curves for bolting - - - - - 1b to 14b



Range 114 to 1094 mm



Range 1204 to 1904 mm

Main dimensions				Fixing holes					Gear teeth			Tooth force		Mass	Sktech	Basic load rating		curves		Designation
De	Dm	Di	Fe	he	Ne	Fi	hi	Ni	D	m	Z	Norm. Tooth	Max. Tooth force		Fig N°	axial dyn. C	axial stat. Co	raceways (r)	bolt (b)	
mm				mm					kN		Kg		kN							
486	414	325	460	14	24	375	M12	24	335	5	67	18	34	31	C	169	560	1r	1b	RKS.062.20.0414
616	544	444	590	14	32	505	M12	32	456	6	76	25	45	42	C	188	740	2r	2b	RKS.062.20.0544
716	644	546	690	14	36	605	M12	36	558	6	93	25	45	50	C	200	880	3r	3b	RKS.062.20.0644
816	744	648	790	14	40	705	M12	40	660	6	110	25	45	58	C	211	1010	4r	4b	RKS.062.20.0744
916	844	736	890	14	40	805	M12	40	752	8	94	33	60	69	C	222	1150	5r	5b	RKS.062.20.0844
1016	944	840	990	14	44	905	M12	44	856	8	107	33	60	76	C	231	1280	6r	6b	RKS.062.20.0944
1166	1094	984	1140	14	48	1055	M12	48	1000	8	125	33	60	91	C	244	1490	7r	7b	RKS.062.20.1094
1289	1204	1072	1257	16	45	1151	16	45	1080	10	108	59	106	145	D	371	1943	8r	8b	RKS.062.25.1204
1399	1314	1182	1367	16	50	1261	16	50	1190	10	119	59	106	159	D	383	2124	9r	9b	RKS.062.25.1314
1509	1424	1292	1477	16	54	1371	16	54	1300	10	130	59	106	172	D	395	2304	10r	10b	RKS.062.25.1424
1619	1534	1402	1587	16	60	1481	16	60	1410	10	141	59	106	186	D	406	2485	11r	11b	RKS.062.25.1534
1752	1644	1495	1708	22	54	1580	22	54	1500	10	150	59	106	236	D	416	2666	12r	12b	RKS.062.25.1644
1862	1754	1605	1818	22	60	1690	22	60	1610	10	161	59	106	252	D	424	2847	13r	13b	RKS.062.25.1754
2012	1904	1729	1968	22	64	1840	22	64	1736	14	124	82	147	299	D	571	4048	14r	14b	RKS.062.30.1904

Gear not hardened
 Bearings delivered without centering
 Bearings are not delivered full of grease and consequently must be fully relubricated with SKF LGEP2 or equivalent before the machine is running.
 Material : C 45E => curves N° 1 to 7 – 42 Cr Mo4 => curves N° 8 to 14

Four point contact slewing bearings without gear teeth

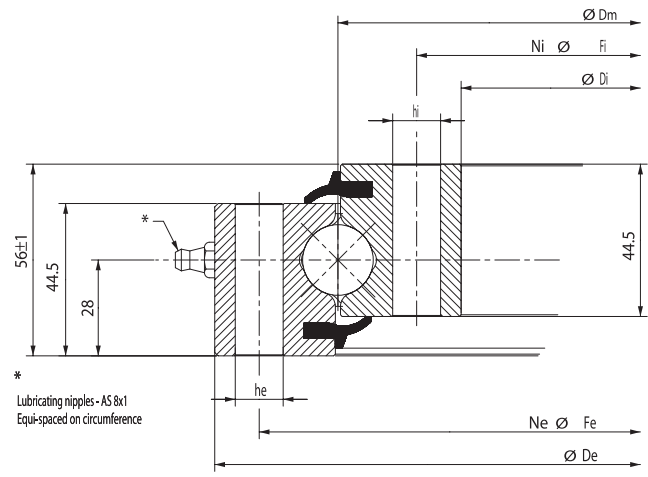


Figure E

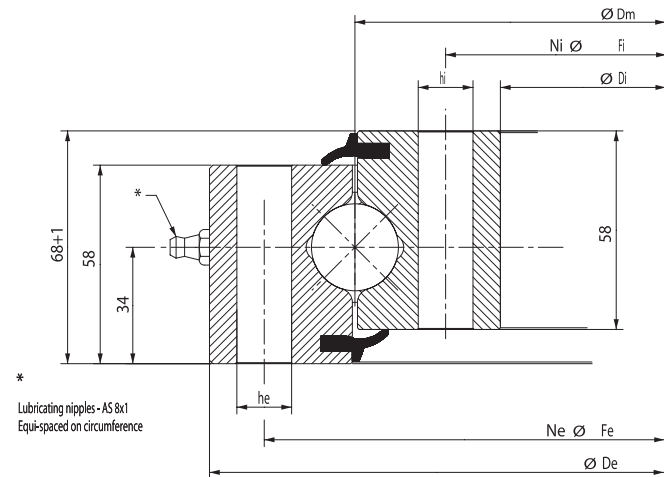
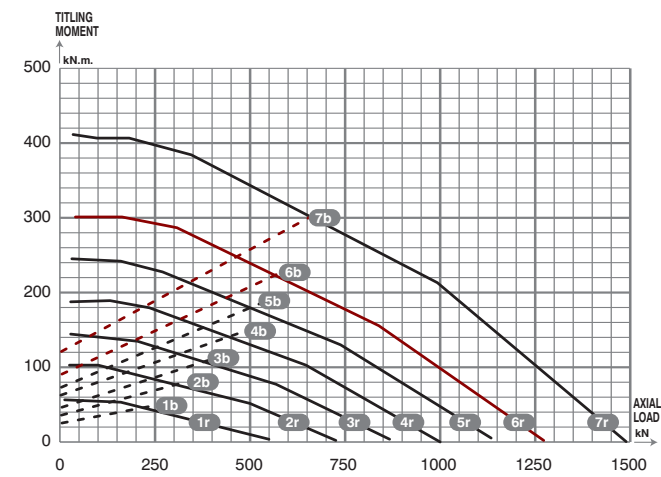
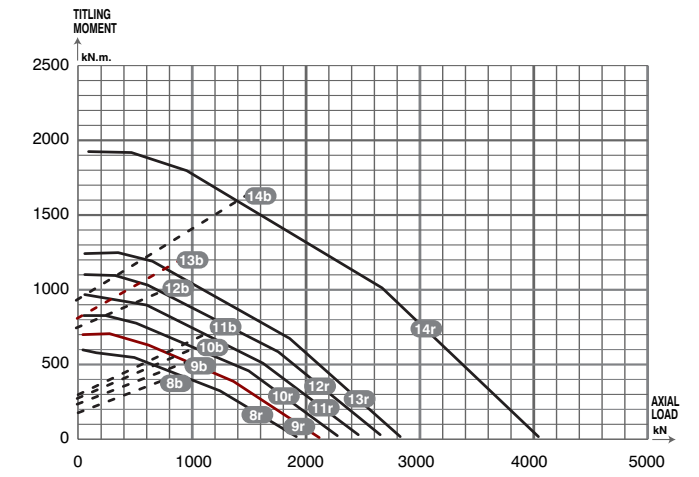


Figure F

Static limited load curves for raceway ——— 1r to 14r
 Static limited load curves for bolting - - - - - 1b to 14b



Range 114 to 1094 mm



Range 1204 to 1904 mm

Main dimensions			Fixing holes						Mass	Basic load rating Sketchcurves			Designation		
De	Dm	Di	Fe	he	Ne	Fi	hi	Ni	axial dyn. C	axial stat. Co	Fig N°	raceways (r)		bolt (b)	
mm			mm						kg	kN					
486	414	342	460	14	24	368	14	24	29	169	560	E	1r	1b	RKS.060.20.0414
616	544	472	590	14	32	498	14	32	37	188	740	E	2r	2b	RKS.060.20.0544
716	644	572	690	14	36	598	14	36	44	200	880	E	3r	3b	RKS.060.20.0644
816	744	672	790	14	40	698	14	40	52	211	1010	E	4r	4b	RKS.060.20.0744
916	844	772	890	14	40	798	14	40	60	222	1150	E	5r	5b	RKS.060.20.0844
1016	944	872	990	14	44	898	14	44	67	231	1280	E	6r	6b	RKS.060.20.0944
1166	1094	1022	1140	14	48	1048	14	48	77	244	1490	E	7r	7b	RKS.060.20.1094
1289	1204	1119	1257	16	45	1151	16	45	121	371	1943	F	8r	8b	RKS.060.25.1204
1399	1314	1229	1367	16	50	1261	16	50	132	383	2124	F	9r	9b	RKS.060.25.1314
1509	1424	1339	1477	16	54	1371	16	54	143	395	2304	F	10r	10b	RKS.060.25.1424
1619	1534	1449	1587	16	60	1481	16	60	154	406	2485	F	11r	11b	RKS.060.25.1534
1752	1644	1536	1708	22	54	1580	22	54	209	416	2666	F	12r	12b	RKS.060.25.1644
1862	1754	1646	1818	22	60	1690	22	60	222	424	2847	F	13r	13b	RKS.060.25.1754
2012	1904	1796	1968	22	64	1840	22	64	241	571	4048	F	14r	14b	RKS.060.30.1904

Gear not hardened
 Bearings delivered without centering
 Bearings are not delivered full of grease and consequently must be fully relubricated with SKF LGEP2 or equivalent before the machine is running.
 Material : C 45E => curves N° 1 to 7 – 42 Cr Mo4 => curves N° 8 to 14

Crossed roller slewing bearings with external gear teeth

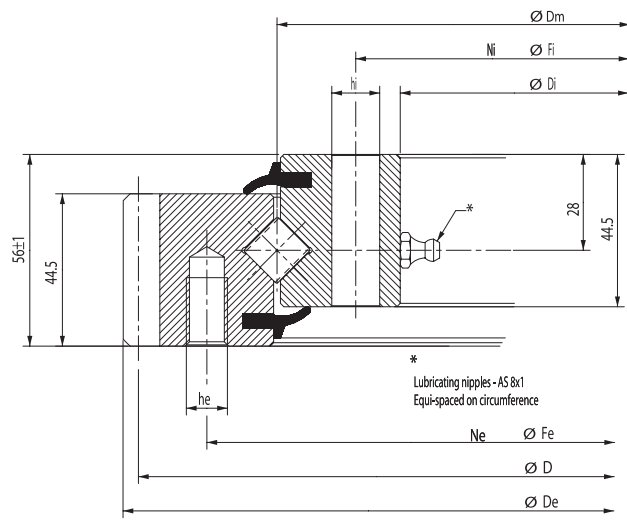


Figure G

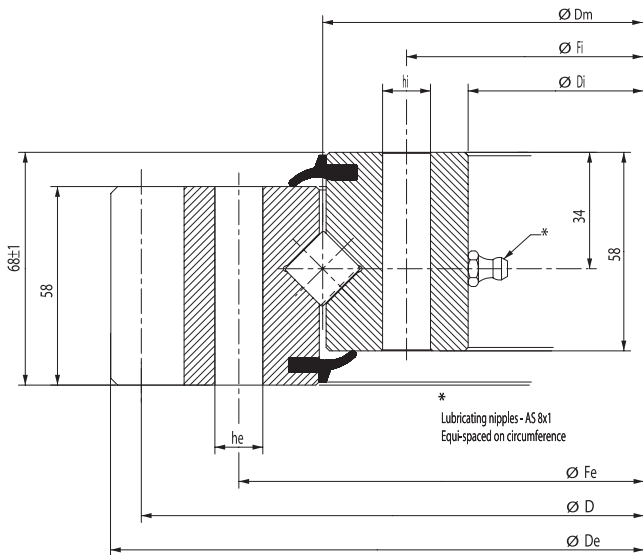
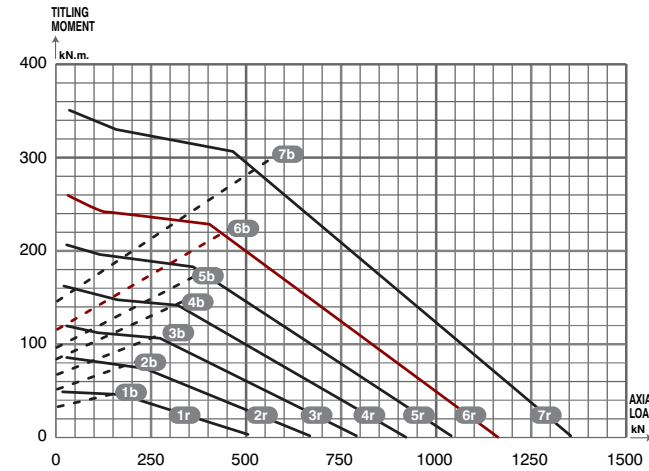
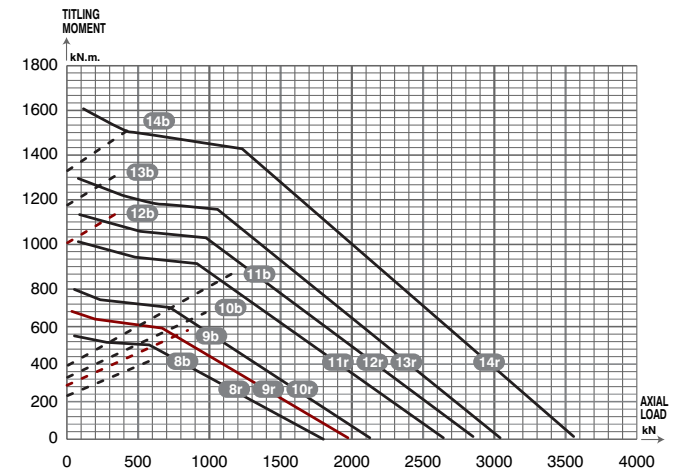


Figure H

Static limited load curves for raceway ——— 1r to 14r
 Static limited load curves for bolting - - - - - 1b to 14b



Range 114 to 1094 mm



Range 1204 to 1904 mm

Main dimensions				Fixing holes				Gear teeth				Tooth force		Mass	Sktech	Basic load rating		curves		Designation
De	Dm	Di	Fe	he	Ne	Fi	hi	Ni	D	m	Z	Norm. Tooth	Max. Tooth force		Fig N°	axial dyn. C	axial stat. Co	raceways (r)	bolt (b)	
mm				mm				kN		Kg		kN								
503,3	414	344	455	M12	20	368	14	24	495	5	99	17	31	32	G	229	520	1r	1b	RKS.161.14.0414
640,3	544	474	585	M12	28	498	14	32	630	6	105	23	42	44	G	270	680	2r	2b	RKS.161.14.0544
742,3	644	574	685	M12	32	598	14	36	732	6	122	23	42	52	G	290	800	3r	3b	RKS.161.14.0644
838,1	744	674	785	M12	36	698	14	40	828	6	138	23	42	59	G	315	930	4r	4b	RKS.161.14.0744
950,1	844	774	885	M12	36	798	14	40	936	8	117	32	57	71	G	340	1050	5r	5b	RKS.161.14.0844
1046,1	944	874	985	M12	40	898	14	44	1032	8	129	32	57	77	G	360	1170	6r	6b	RKS.161.14.0944
1198,1	1094	1024	1135	M12	44	1048	14	48	1184	8	148	32	57	91	G	390	1360	7r	7b	RKS.161.14.1094
1338	1204	1119	1257	16	45	1151	16	45	1310	10	131	49	88	154	H	386	1836	8r	8b	RKS.161.16.1204
1448	1314	1229	1367	16	50	1261	16	50	1420	10	142	49	88	168	H	419	1995	9r	9b	RKS.161.16.1314
1558	1424	1339	1477	16	54	1371	16	54	1530	10	153	49	88	182	H	494	2352	10r	10b	RKS.161.16.1424
1668	1534	1449	1587	16	60	1481	16	60	1640	10	164	49	88	195	H	611	2912	11r	11b	RKS.161.16.1534
1791	1644	1536	1708	22	54	1580	22	54	1760	10	176	49	88	242	H	658	3133	12r	12b	RKS.161.16.1644
1901	1754	1646	1818	22	60	1690	22	60	1870	10	187	49	88	258	H	1049	3354	13r	13b	RKS.161.16.1754
2073,4	1904	1796	1968	22	64	1840	22	64	2030	14	145	69	124	306	H	854	4066	14r	14b	RKS.161.20.1904

Gear not hardened
 Bearings delivered without centering
 Bearings are not delivered full of grease and consequently must be fully relubricated with SKF LGEP2 or equivalent before the machine is running.
 Material : C 45E => curves N° 1 to 7 – 42 Cr Mo4 => curves N° 8 to 14

Crossed roller slewing bearings with internal gear teeth

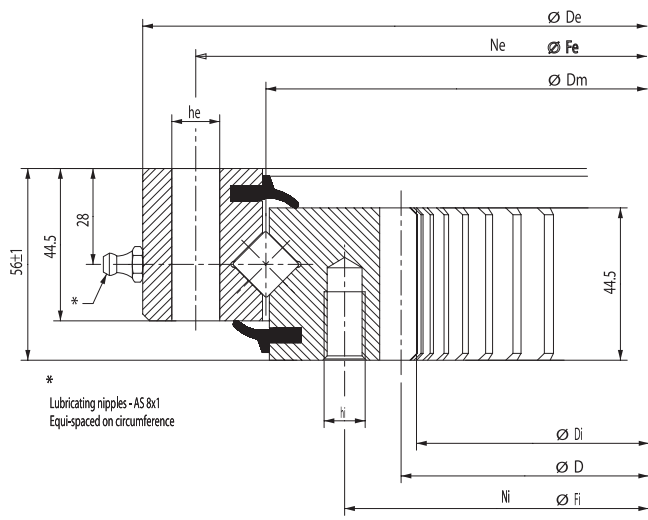


Figure I

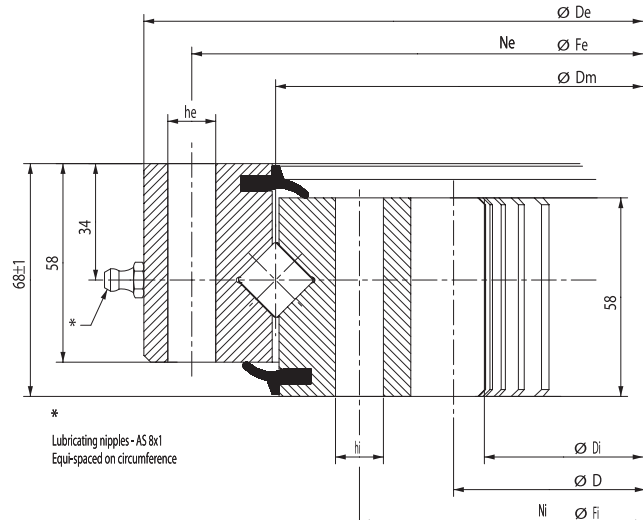
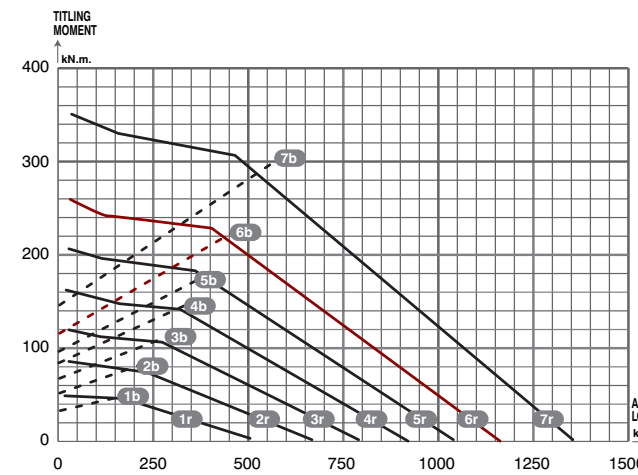
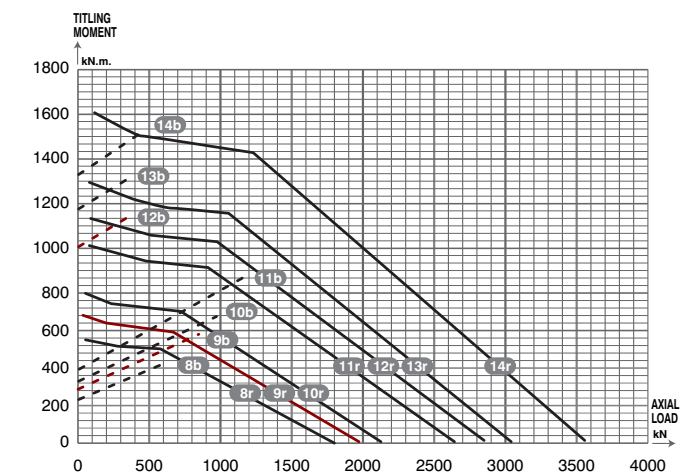


Figure J

Static limited load curves for raceway ——— 1r to 14r
 Static limited load curves for bolting - - - - - 1b to 14b



Range 114 to 1094 mm



Range 1204 to 1904 mm

Main dimensions				Fixing holes					Gear teeth			Tooth force		Mass	Sktech	Basic load rating		curves		Designation
De	Dm	Di	Fe	he	Ne	Fi	hi	Ni	D	m	Z	Norm. Tooth force	Max. Tooth		Fig N°	axial dyn. C	axial stat. Co	raceways (r)	bolt (b)	
mm				mm					kN			Kg			kN					
484	414	325	460	14	24	375	M12	24	335	5	67	18	34	31	I	229	520	1r	1b	RKS.162.14.0414
614	544	444	590	14	32	505	M12	32	456	6	76	25	45	43	I	270	680	2r	2b	RKS.162.14.0544
714	644	546	690	14	36	605	M12	36	558	6	93	25	45	50	I	290	800	3r	3b	RKS.162.14.0644
814	744	648	790	14	40	705	M12	40	660	6	110	25	45	58	I	315	930	4r	4b	RKS.162.14.0744
914	844	736	890	14	40	805	M12	40	752	8	94	33	60	69	I	340	1050	5r	5b	RKS.162.14.0844
1014	944	840	990	14	44	905	M12	44	856	8	107	33	60	76	I	360	1170	6r	6b	RKS.162.14.0944
1164	1094	984	1140	14	48	1055	M12	48	1000	8	125	33	60	91	I	390	1360	7r	7b	RKS.162.14.1094
1289	1204	1072	1257	16	45	1151	16	45	1080	10	108	59	106	148	J	386	1836	8r	8b	RKS.162.16.1204
1399	1314	1182	1367	16	50	1261	16	50	1190	10	119	59	106	161	J	419	1995	9r	9b	RKS.162.16.1314
1509	1424	1292	1477	16	54	1371	16	54	1300	10	130	59	106	175	J	494	2352	10r	10b	RKS.162.16.1424
1619	1534	1402	1587	16	60	1481	16	60	1410	10	141	59	106	189	J	611	2912	11r	11b	RKS.162.16.1534
1752	1644	1495	1708	22	54	1580	22	54	1500	10	150	59	106	239	J	658	3133	12r	12b	RKS.162.16.1644
1862	1754	1605	1818	22	60	1690	22	60	1610	10	161	59	106	256	J	1049	3354	13r	13b	RKS.162.16.1754
2012	1904	1729	1968	22	64	1840	22	64	1736	14	124	82	147	304	J	854	4066	14r	14b	RKS.162.20.1904

Gear not hardened
 Bearings delivered without centering
 Bearings are not delivered full of grease and consequently must be fully relubricated with SKF LGEP2 or equivalent before the machine is running.
 Material : C 45E => curves N° 1 to 7 – 42 Cr Mo4 => curves N° 8 to 14

Crossed roller slewing bearings without gear teeth

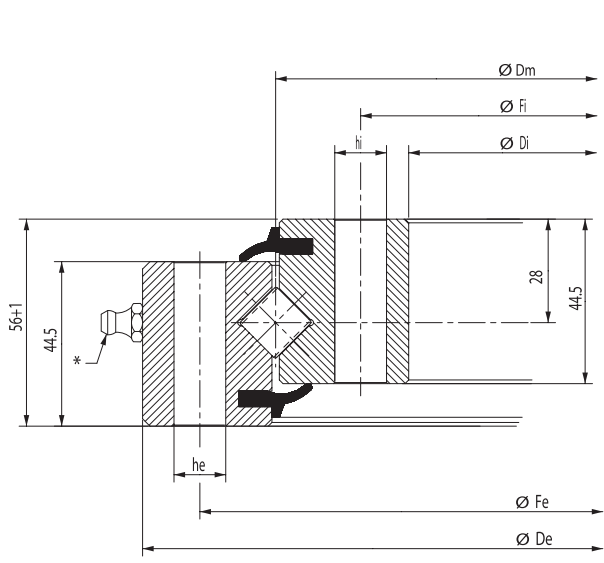


Figure K

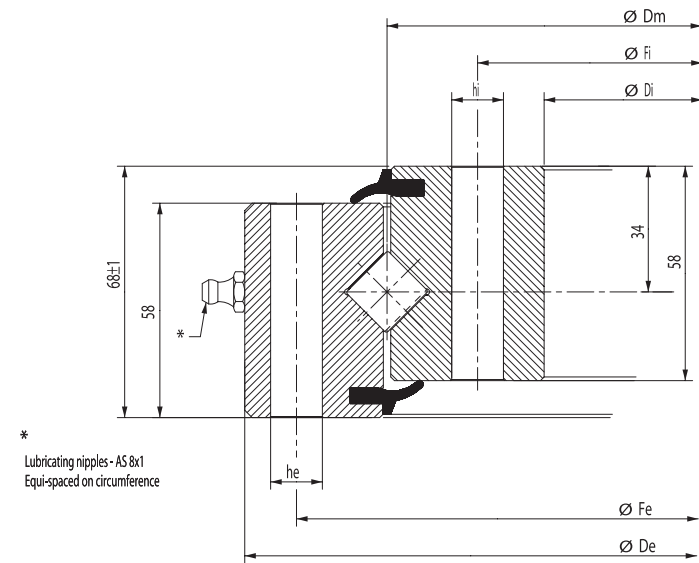
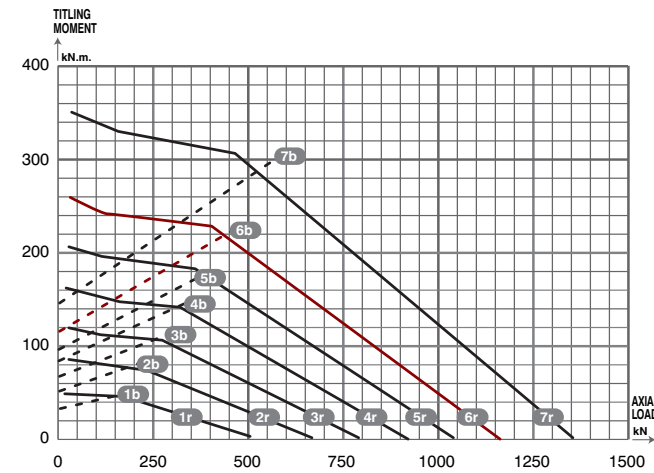


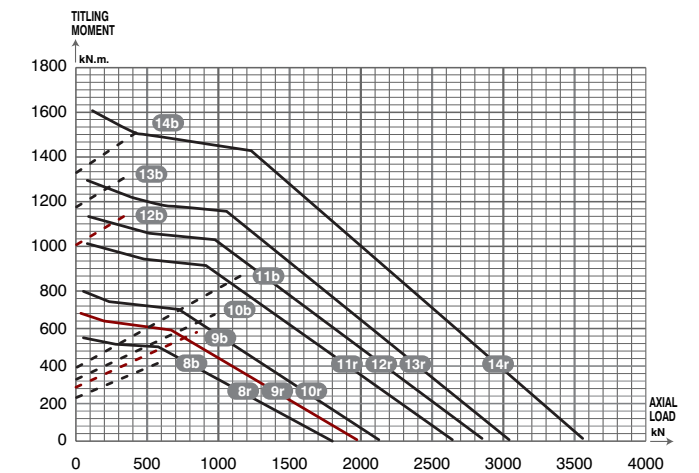
Figure L

* Lubricating nipples - AS Bx1
Equal-spaced on circumference

Static limited load curves for raceway ——— 1r to 14r
Static limited load curves for bolting - - - - - 1b to 14b



Range 114 to 1094 mm



Range 1204 to 1904 mm

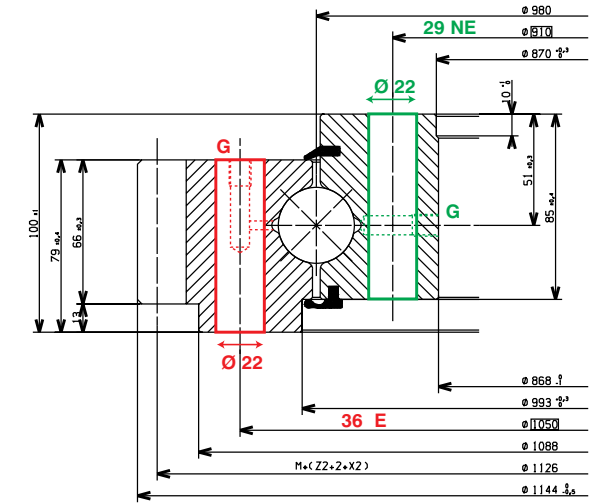
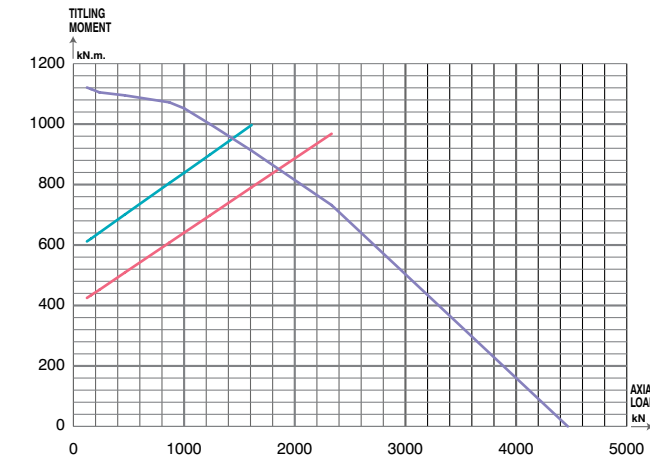
Main dimensions		Fixing holes		Mass	Basic load rating		Sketch	curves		Designation
De	Dm	Di	Fe		axial dyn. C	axial stat. Co		Fig N°	raceways (r)	
mm				kg	kN					
484	414	344	460	28	K	229	520	1r	1b	RKS.160.14.0414
614	544	474	590	38	K	270	680	2r	2b	RKS.160.14.0544
714	644	574	690	44	K	290	800	3r	3b	RKS.160.14.0644
814	744	674	790	52	K	315	930	4r	4b	RKS.160.14.0744
914	844	774	890	60	K	340	1050	5r	5b	RKS.160.14.0844
1014	944	874	990	67	K	360	1170	6r	6b	RKS.160.14.0944
1164	1094	1024	1140	77	K	390	1360	7r	7b	RKS.160.14.1094
1289	1204	1119	1257	124	L	386	1836	8r	8b	RKS.160.16.1204
1399	1314	1229	1367	135	L	419	1995	9r	9b	RKS.160.16.1314
1509	1424	1339	1477	146	L	494	2352	10r	10b	RKS.160.16.1424
1619	1534	1449	1587	158	L	611	2912	11r	11b	RKS.160.16.1534
1752	1644	1536	1708	214	L	658	3133	12r	12b	RKS.160.16.1644
1862	1754	1646	1818	228	L	1049	3354	13r	13b	RKS.160.16.1754
2012	1904	1796	1968	248	L	854	4066	14r	14b	RKS.160.20.1904

Gear not hardened
Bearings delivered without centering
Bearings are not delivered full of grease and consequently must be fully relubricated with SKF LGEP2 or equivalent before the machine is running.
Material : C 45E => curves N° 1 to 7 – 42 Cr Mo4 => curves N° 8 to 14

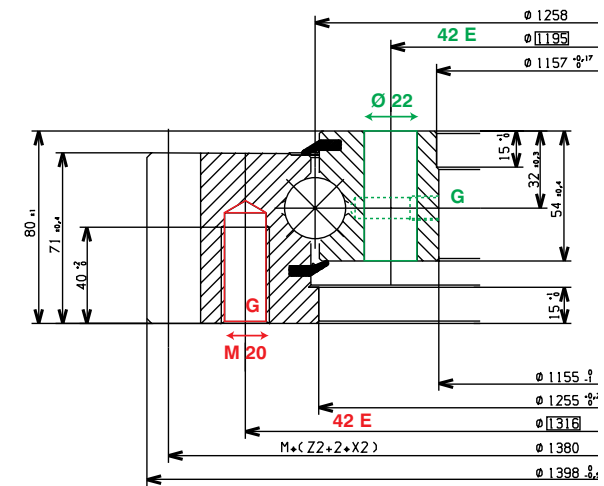
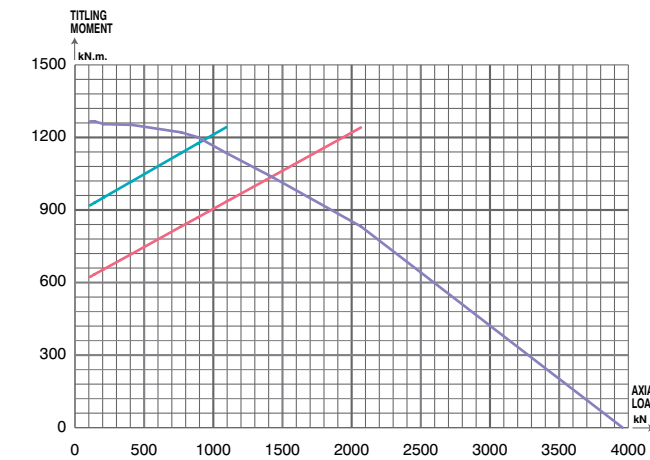
Other standard items

Main dimensions			Gear teeth				Steel code	Designation	Page
De Outer diameter	Dm Raceway diameter	De inner diameter	De Gear PCD	m	Z	Mass kg			
Four point contact slewing bearings with external gear teeth									
1144	980	868	1110	10,0	111	219	X/X	RKS.204040101001	P. 19
1398	1258	1155	1380	10,0	138	203	X/X	RKS.302070202001	P. 19
Four point contact slewing bearings without gear teeth									
234	179	125	0	0,0	0	6	X/X	RKS.900155101001	P. 20
332	257	189	0	0,0	0	17	X/X	RKS.951145101001	P. 20
475	402	335	0	0,0	0	27	X/X	RKS.901175101001	P. 20
Crossed roller slewing bearings with external gear teeth									
403	310	233	396	4,5	88	24	X/X	RKS.921150303001	P. 21
589,9	479	378	580,5	4,5	129	62	X/X	RKS.121400101002	P. 21
695	574	477	685	5,0	137	79	X/X	RKS.121390101002	P. 21
816	675	571	792	6,0	132	117	X/X	RKS.122290101002	P. 22
864	760	668	852	6,0	142	97	X/X	RKS.221310101001	P. 22
979	853	715	940	10,0	94	178	XD/X	RKS.222500101001	P. 22
1080	980	886	1064	8,0	133	119	XB/X	RKS.221300101001	P. 23
1144	1010	868	1122	11,0	102	230	XD/X	RKS.222600101001	P. 23
1289,5	1117	980	1250	11,0	102	230	XD/X	RKS.324012324001	P. 23
1296	1117	985	1260	12,0	105	340	XD/X	RKS.322300101001	P. 24
1475,5	1250	1080	1440	10,0	144	490	XD/X	RKS.425060101001	P. 24
1475,5	1250	1080	1428	14,0	102	480	XD/X	RKS.425060201001	P. 24
1475,5	1250	1080	1428	14,0	102	481	XD/X	RKS.425062621001	P. 25
1604	1390	1205	1570	10,0	157	620	XD/X	RKS.427020101001	P. 25
1804,8	1690	1430	1744	16,0	109	710	TDX	RKS.427050403001	P. 25
Crossed roller slewing bearings with internal gear teeth									
562	489	385	396	6,0	66	42	X/X	RKS.111280101002	P. 26
825	713	567,5	396	7,0	82	133	X/X	RKS.212140106001	P. 26
972	885	785,6	800	8,0	100	109	X/X	RKS.211430101001	P. 26
1172	1077	961	980	10,0	98	155	XB/X	RKS.211440101001	P. 27
1040	1177	965,1	958,8	10,2	94	182	XD/X	RKS.212600101001	P. 27
1316	1202	1082	1100	10,0	110	260	XD/X	RKS.312410101001	P. 27
1316	1202	1082	1100	10,0	110	260	XD/X	RKS.312410102001	P. 28
1316	1202	1082	1100	10,0	110	260	X/X	RKS.312290202001	P. 28
1365	1231	1038,8	1050	14,0	75	370	TD/X	RKS.313500404001	P. 28
1477,8	1240	1038,3	1060,8	10,2	104	425	XD/X	RKS.314310101001	P. 29
1495	1350	1164,8	1190	14,0	85	440	XMD/XM	RKS.413290203001	P. 29
2290	2202	2091	2100	5,0	420	291	X/X	RKS.512080101001	P. 29
Crossed roller slewing bearings without gear teeth									
403,5	310	233		0,0	0	25	X/X	RKS.921155203001	P. 30
589,5	474	378		0,0	0	64	X/X	RKS.121405101002	P. 30
695	574	477		0,0	0	84	X/X	RKS.121395101002	P. 30
816	675	571		0,0	0	125	X/X	RKS.122295101002	P. 31
979	823	715		0,0	0	193	X/X	RKS.223475101001	P. 31
1144	980	868		0,0	0	230	XD/X	RKS.222605101001	P. 31

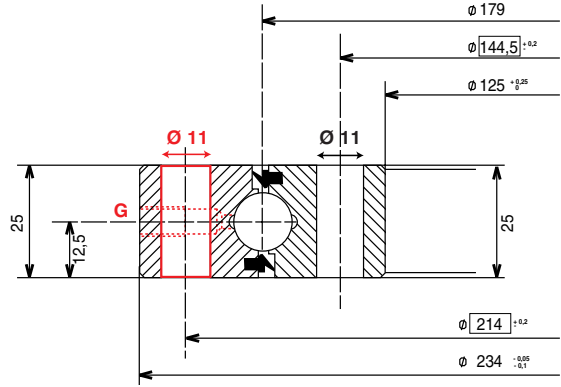
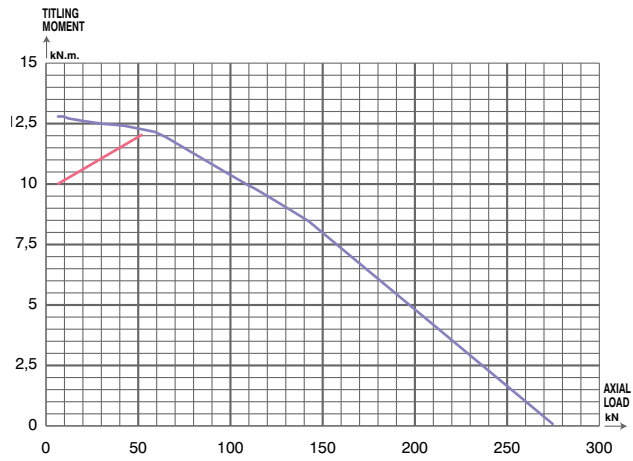
RKS.204040101001



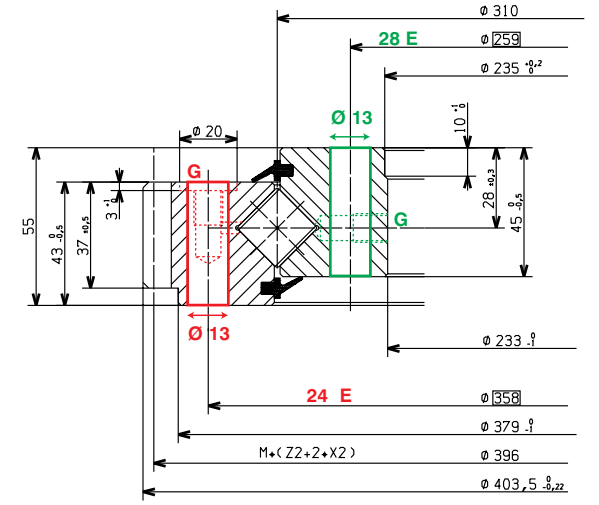
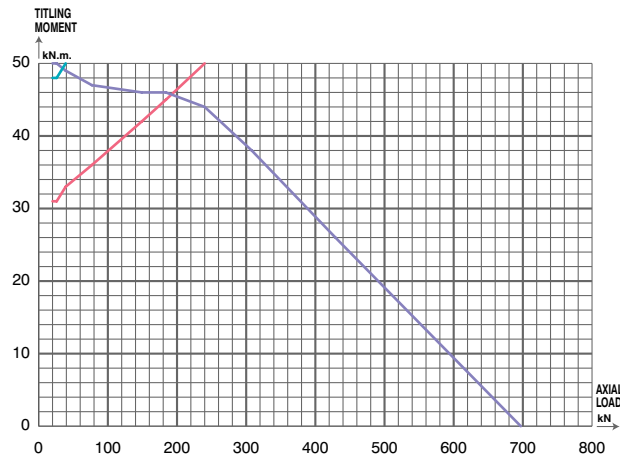
RKS.302070202001



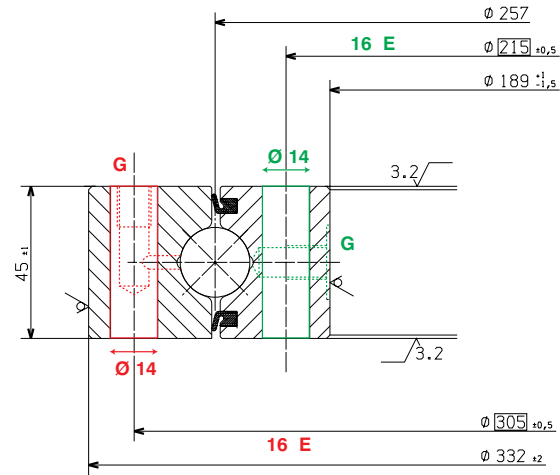
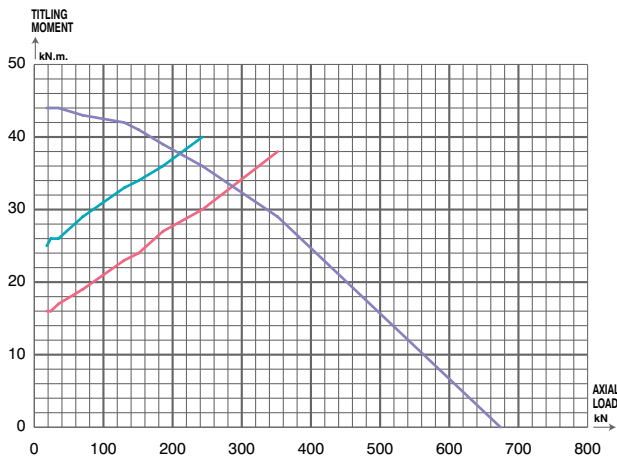
RKS.900155101001



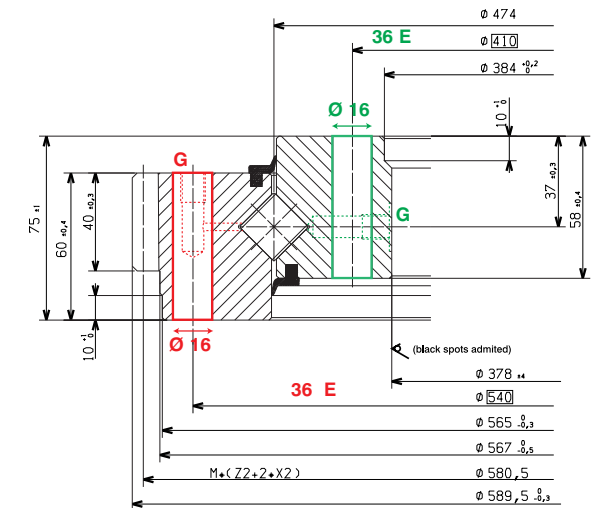
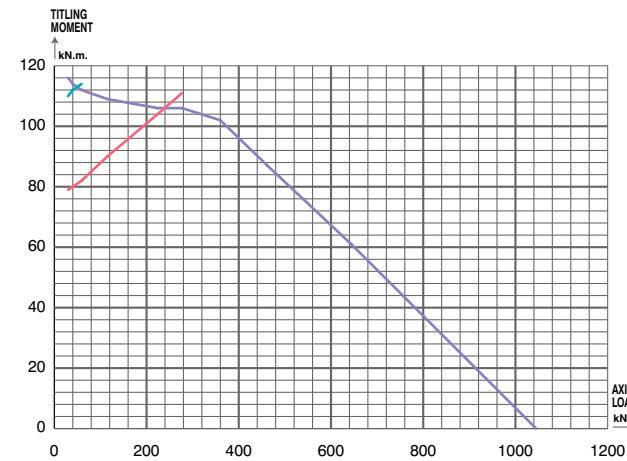
RKS.921150303001



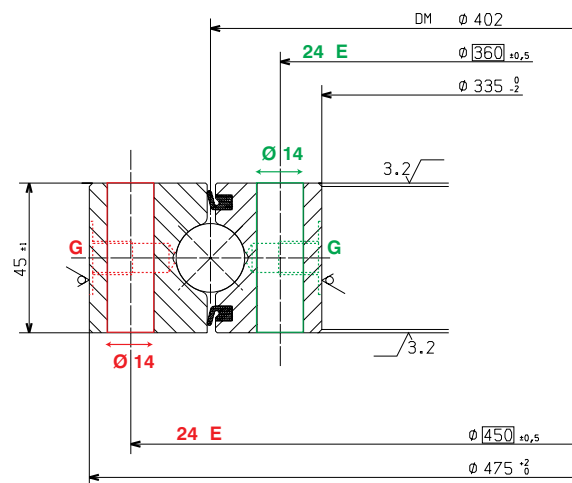
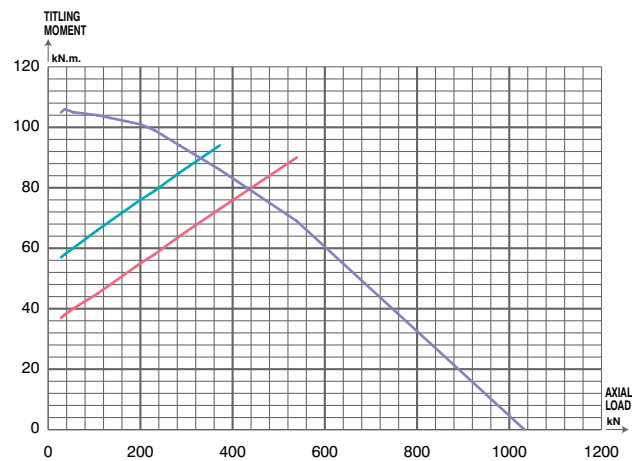
RKS.951145101001



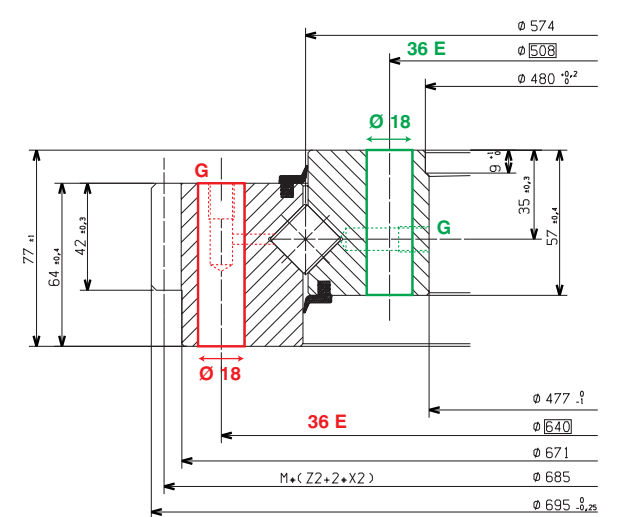
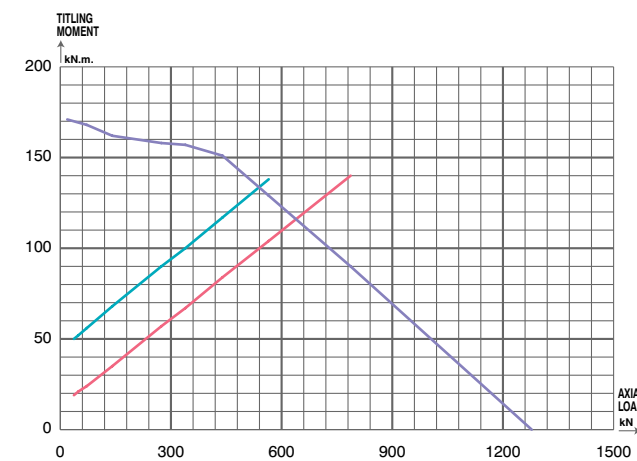
RKS.121400101002



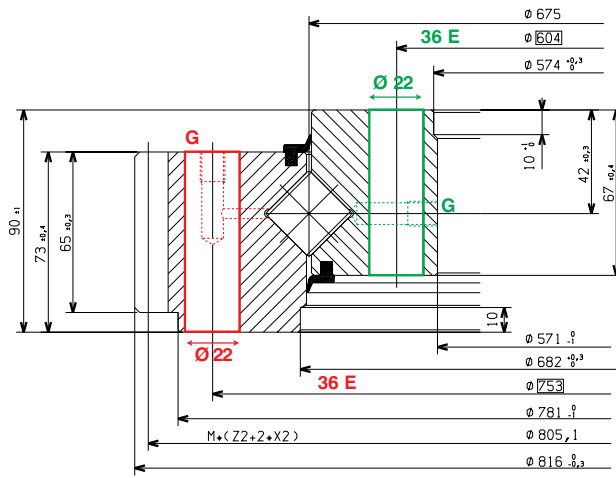
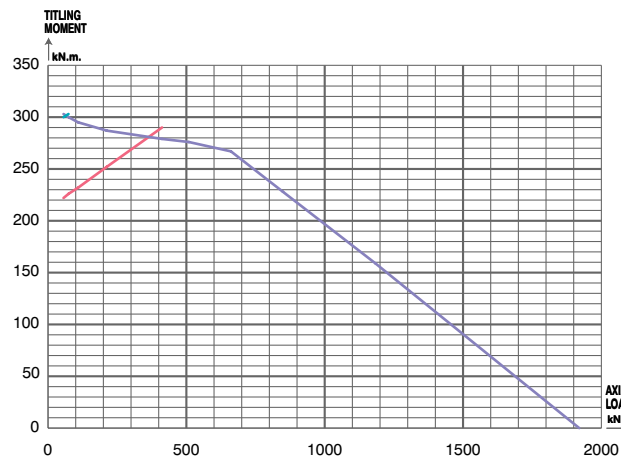
RKS.901175101001



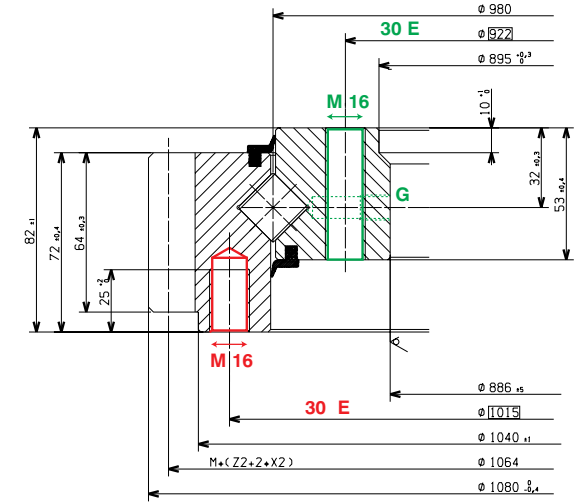
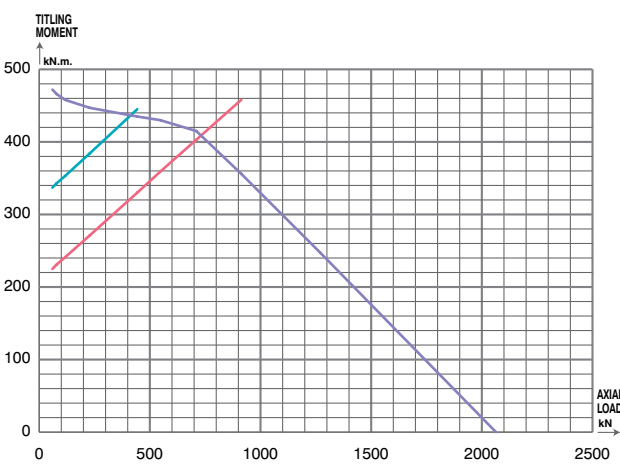
RKS.121390101002



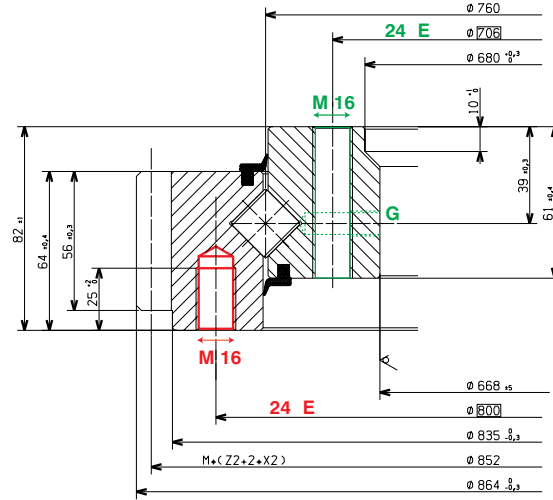
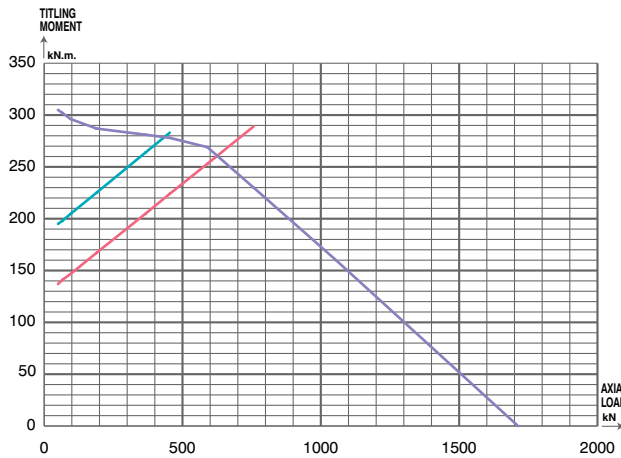
RKS.122290101002



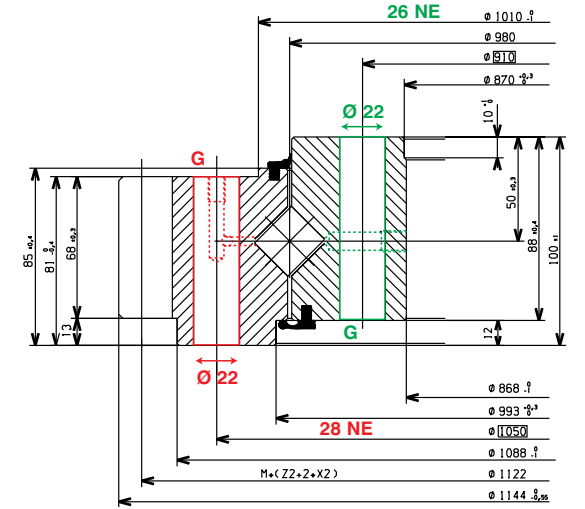
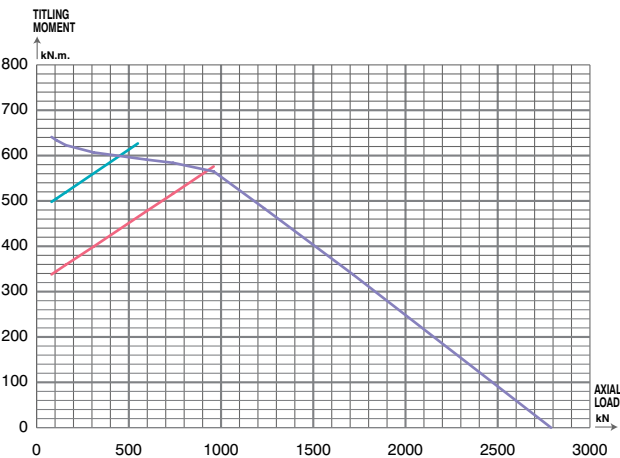
RKS.221300101001



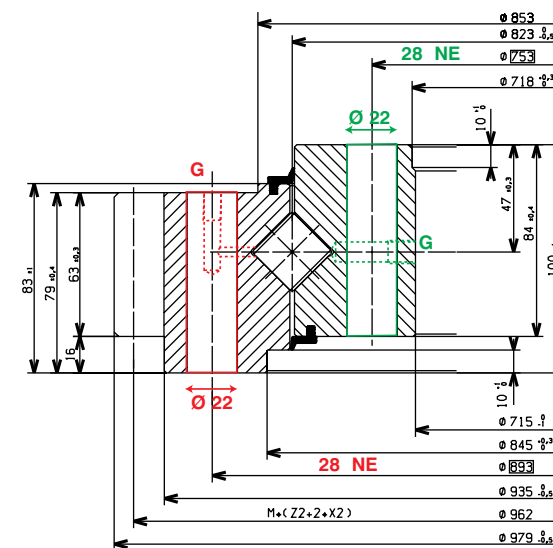
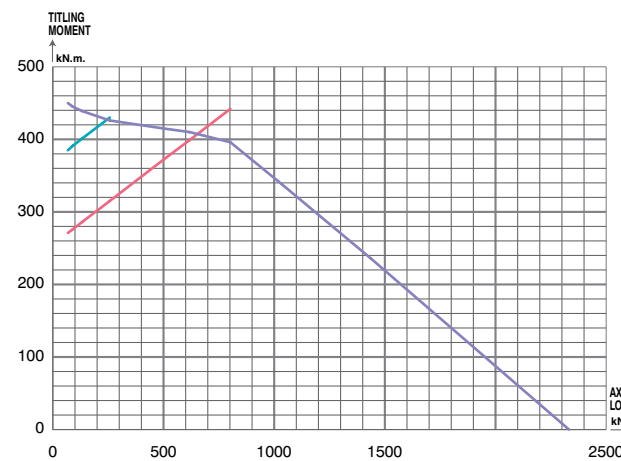
RKS.221310101001



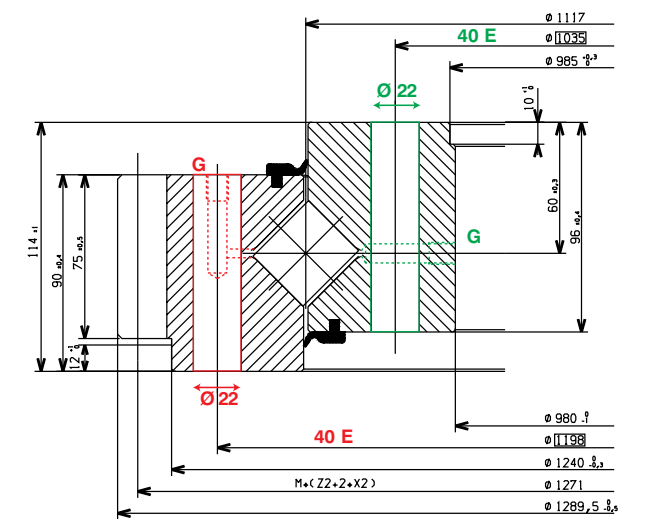
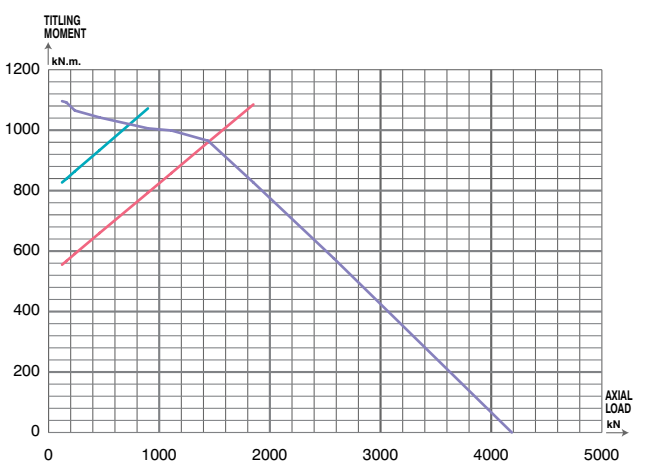
RKS.222600101001



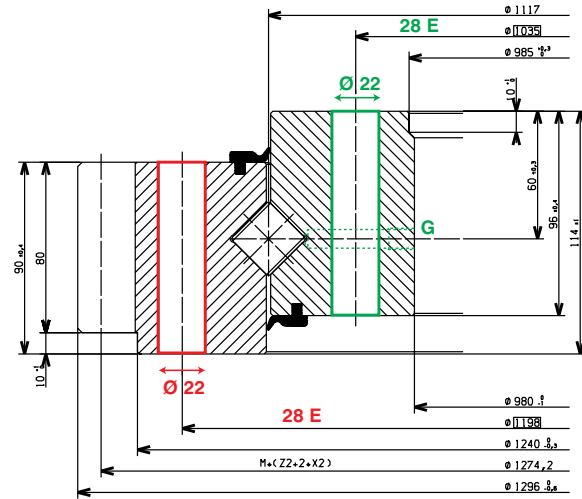
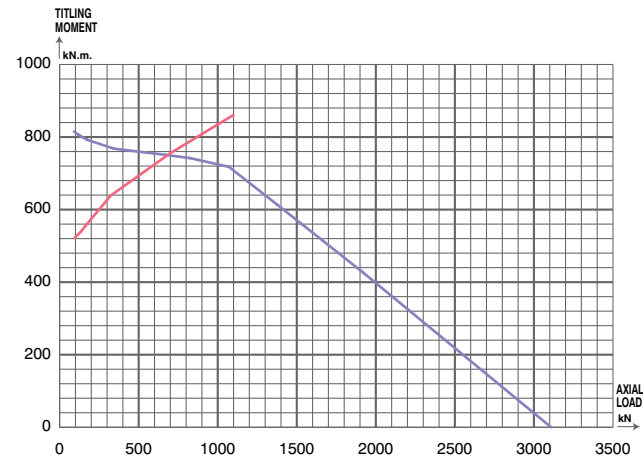
RKS.222500101001



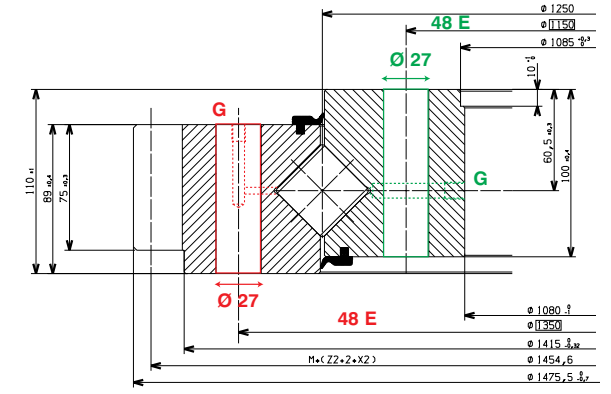
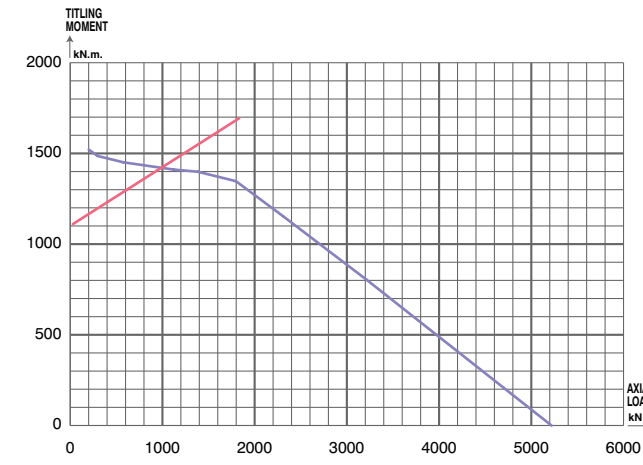
RKS.324012324001



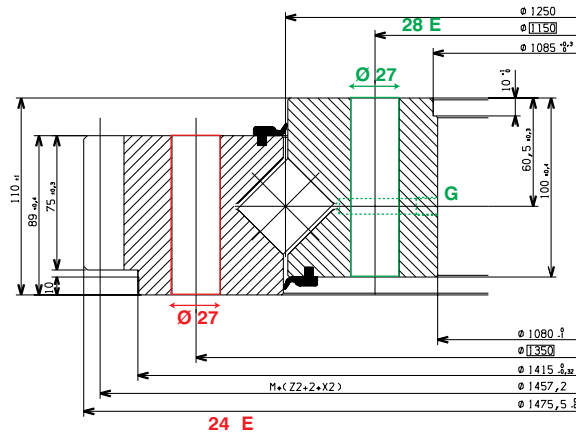
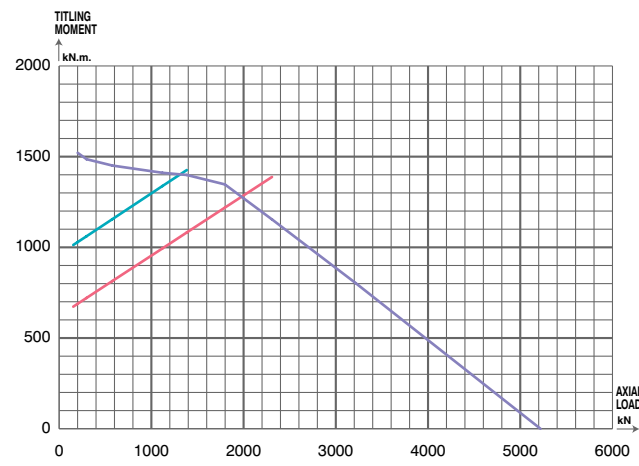
RKS.322300101001



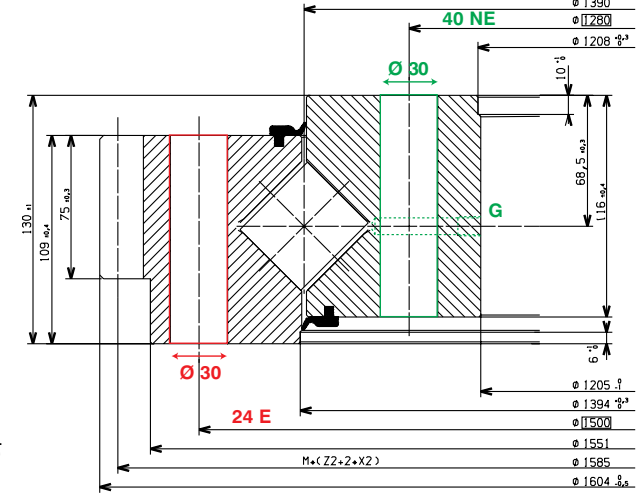
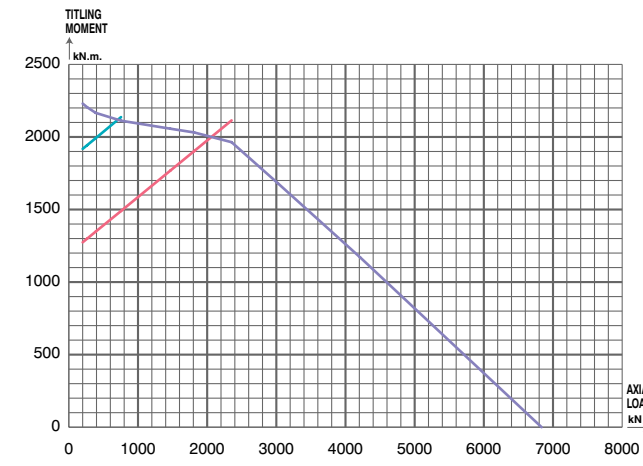
RKS.425062621001



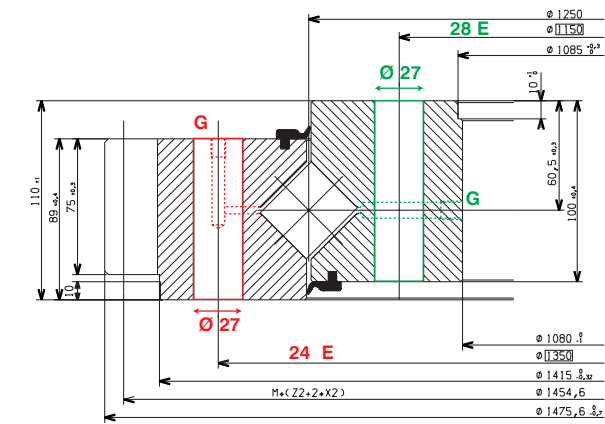
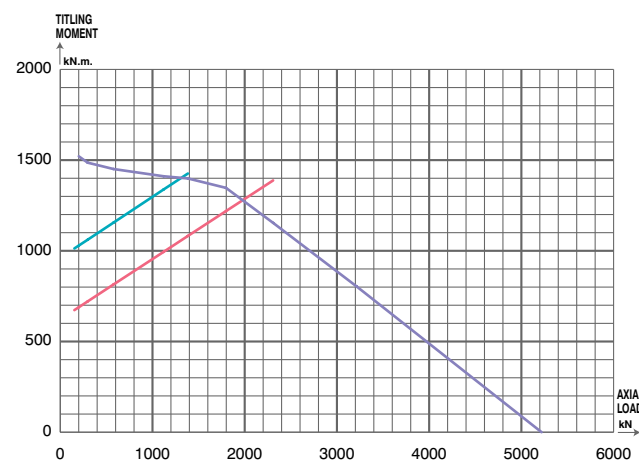
RKS.425060101001



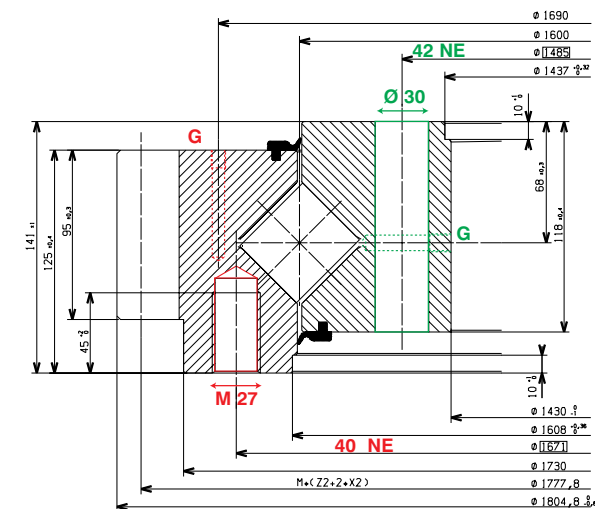
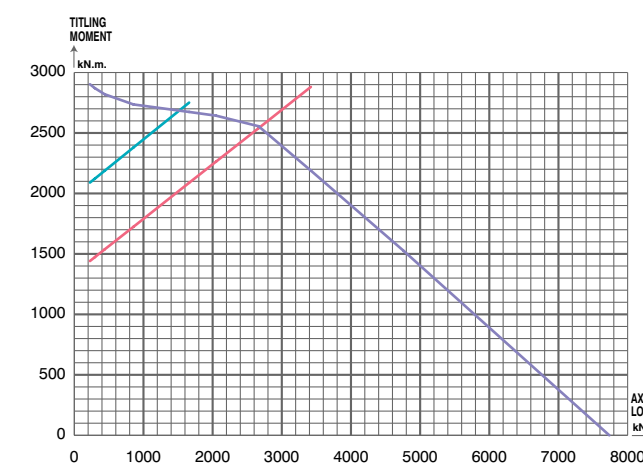
RKS.427020101001



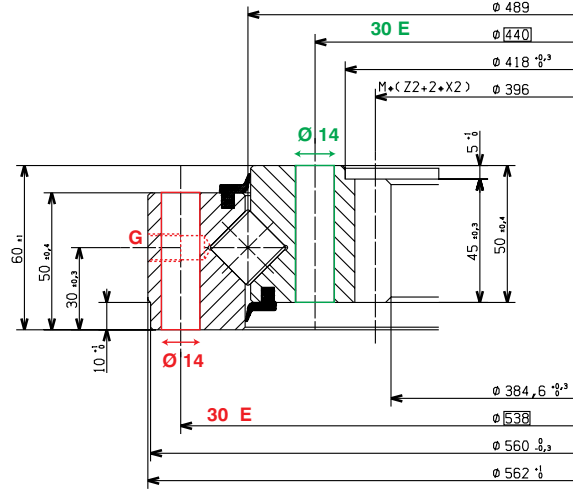
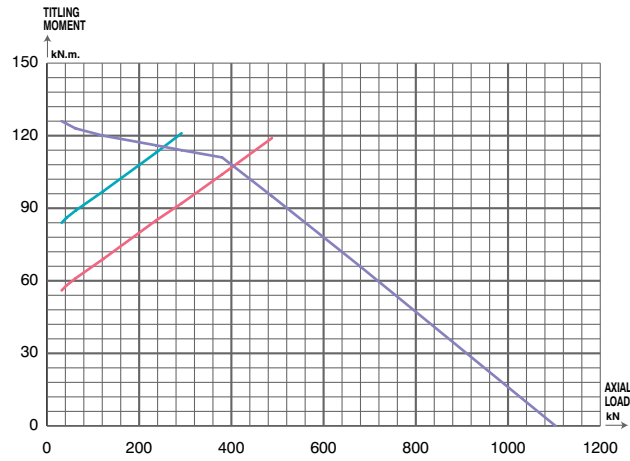
RKS.425060201001



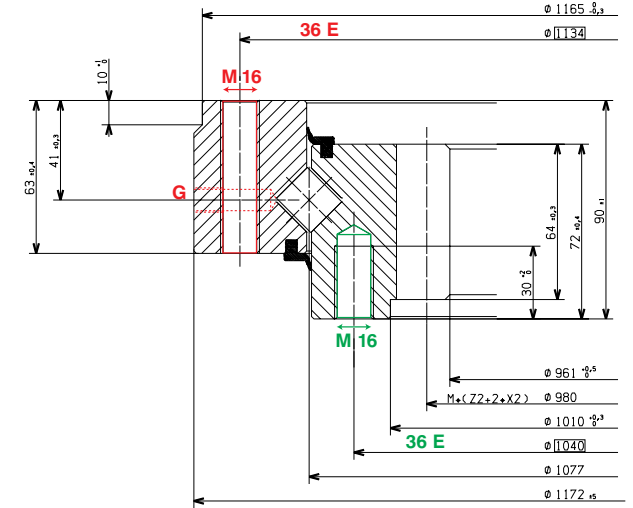
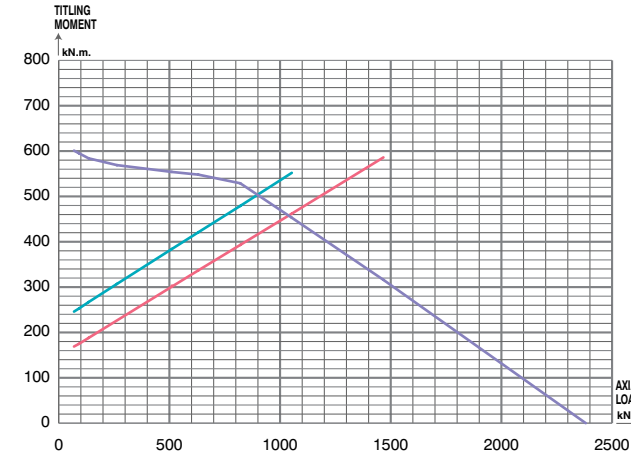
RKS.427050403001



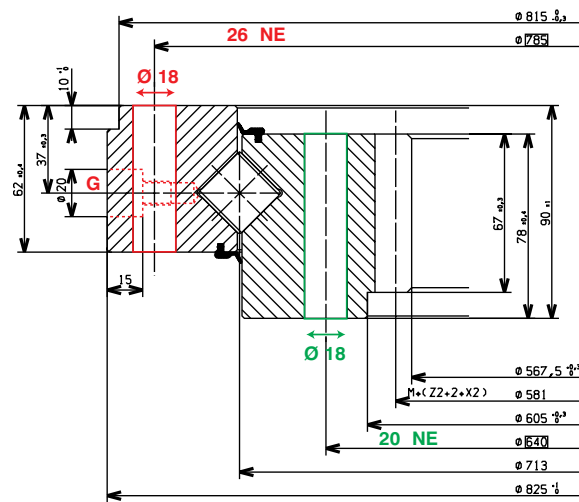
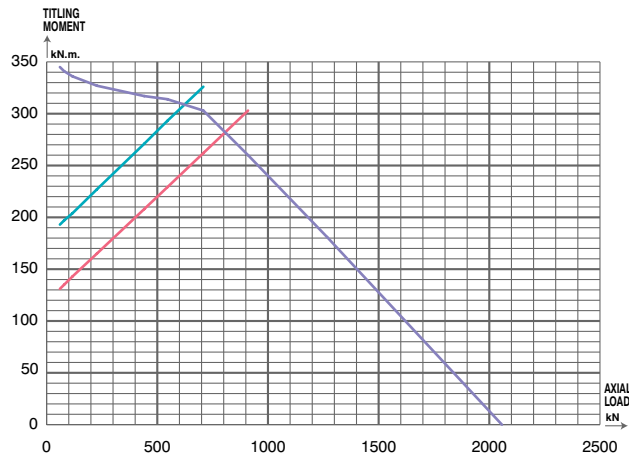
RKS.111280101002



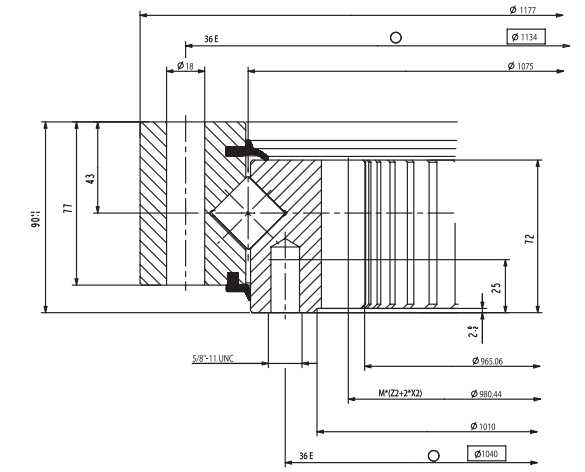
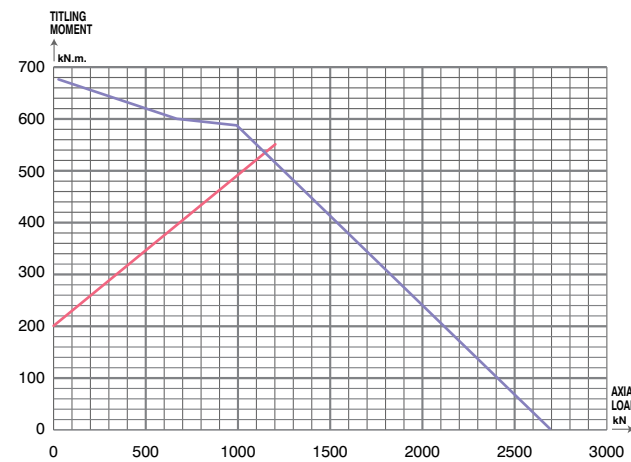
RKS.211440101001



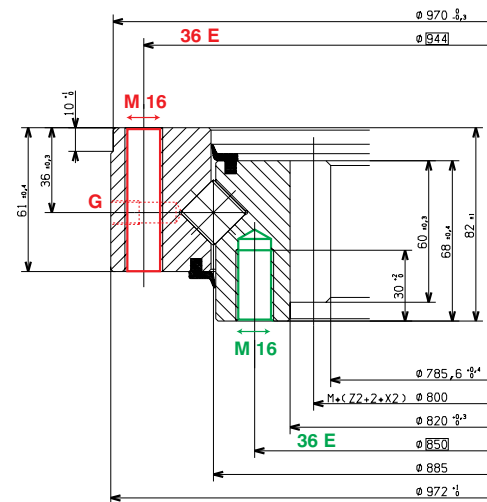
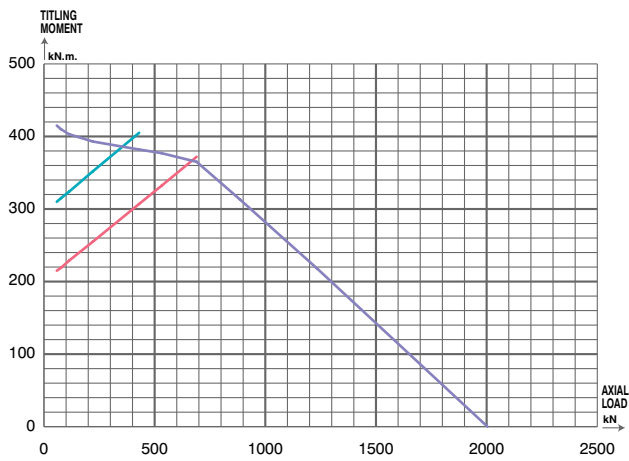
RKS.212140106001



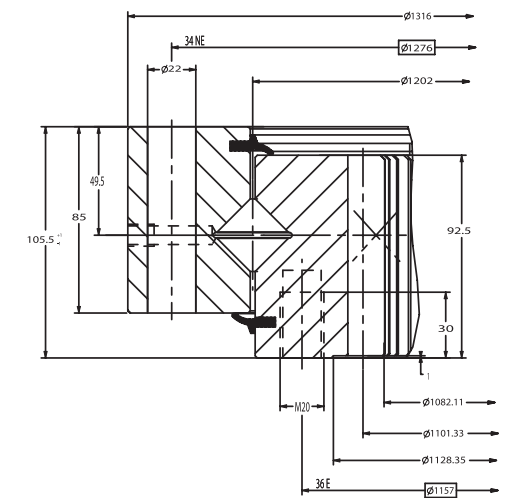
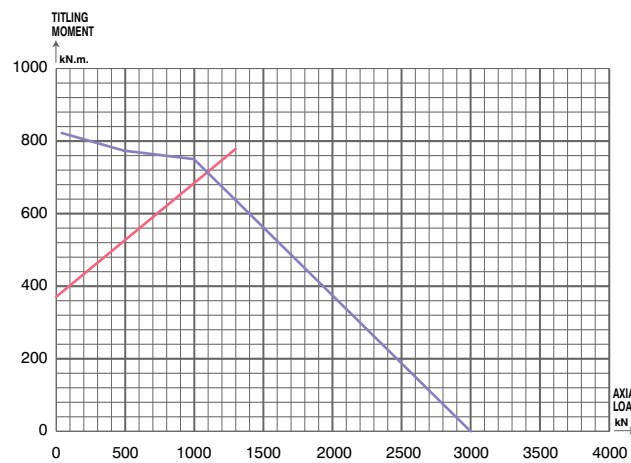
RKS.212600101001



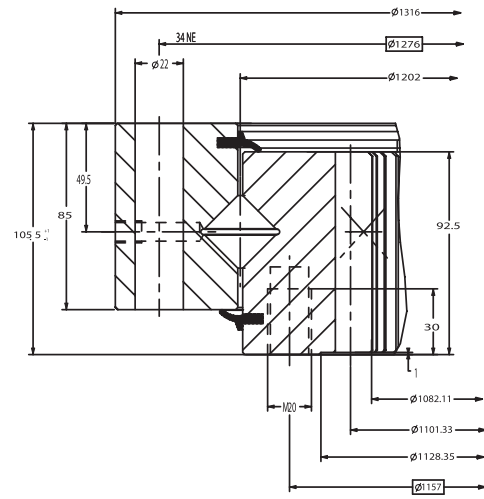
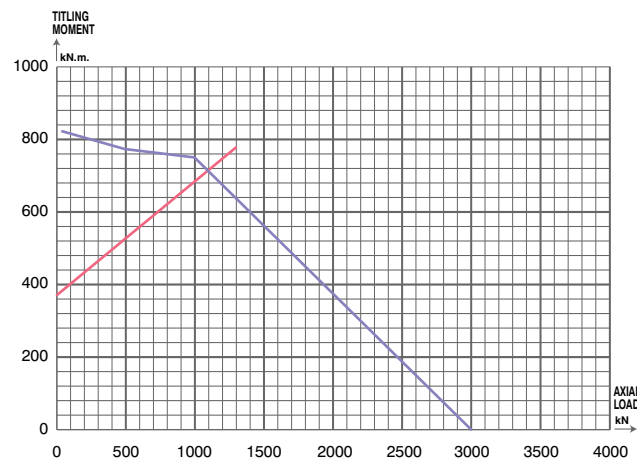
RKS.211430101001



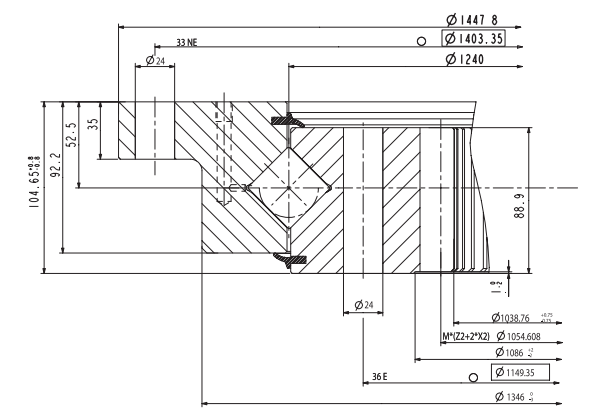
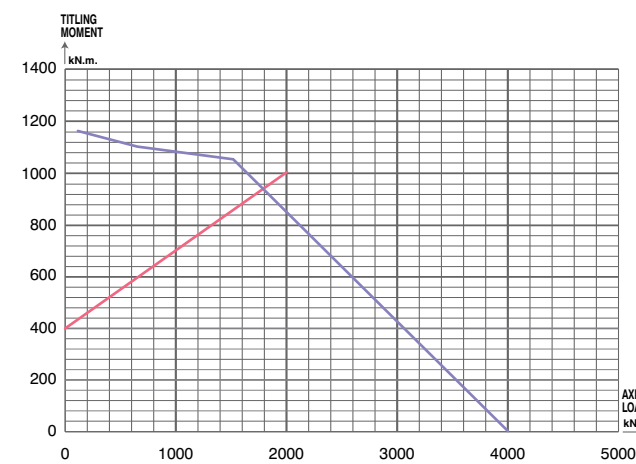
RKS.312410101001



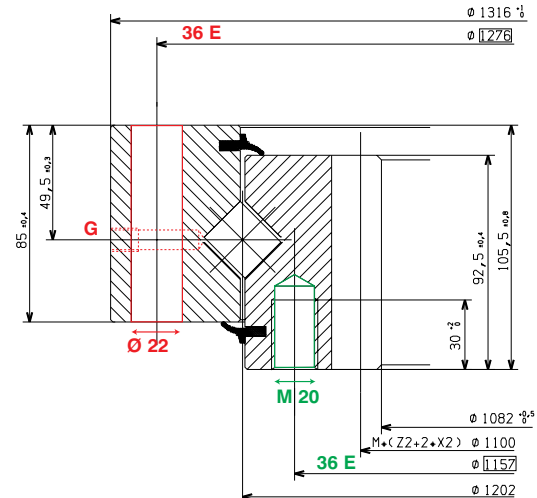
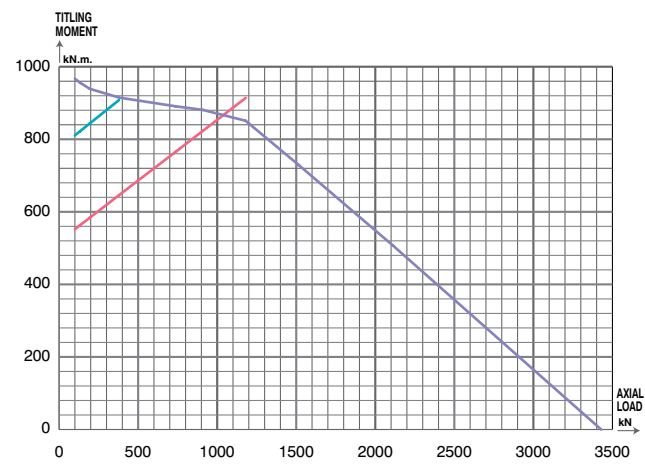
RKS.312410102001



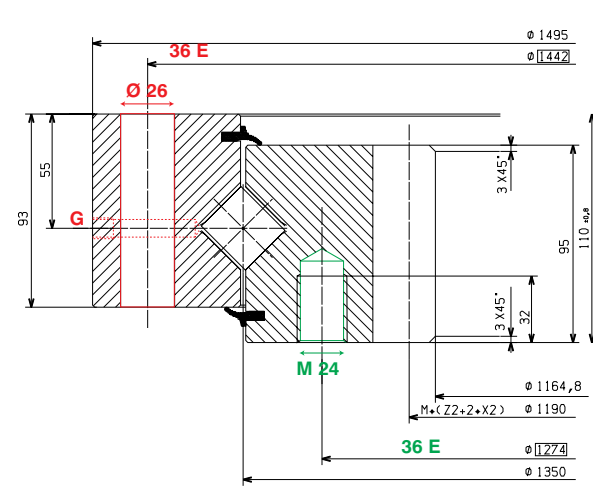
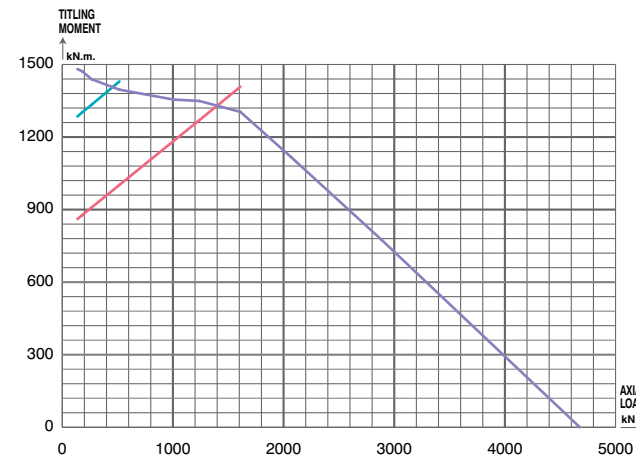
RKS.314310101001



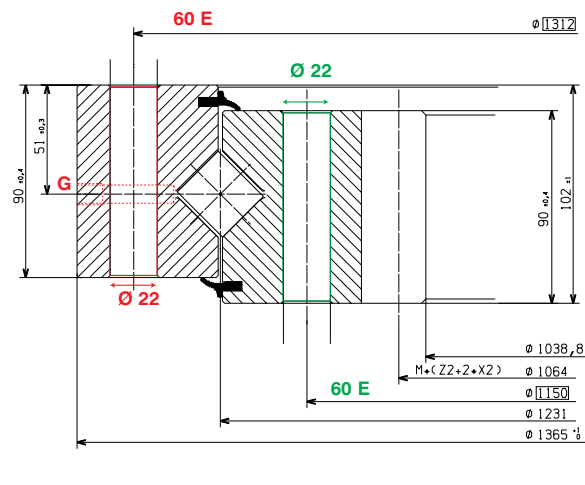
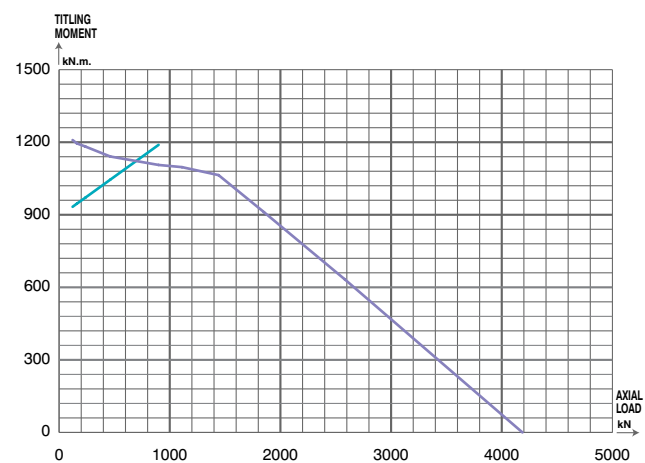
RKS.312290202001



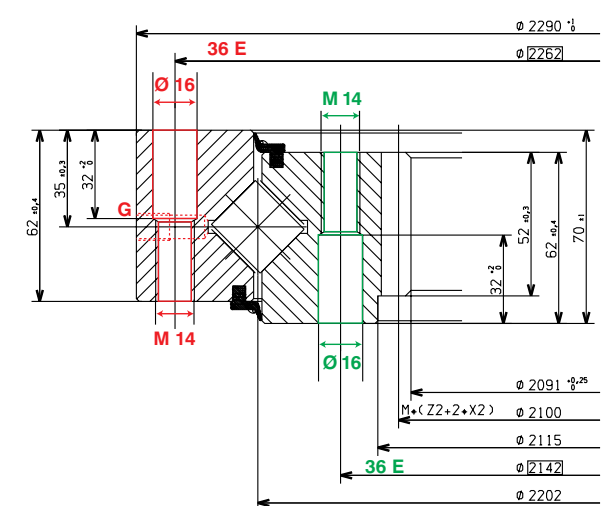
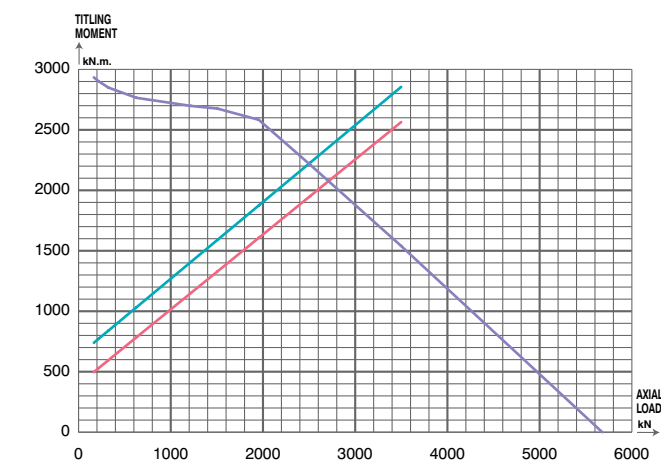
RKS.413290203001



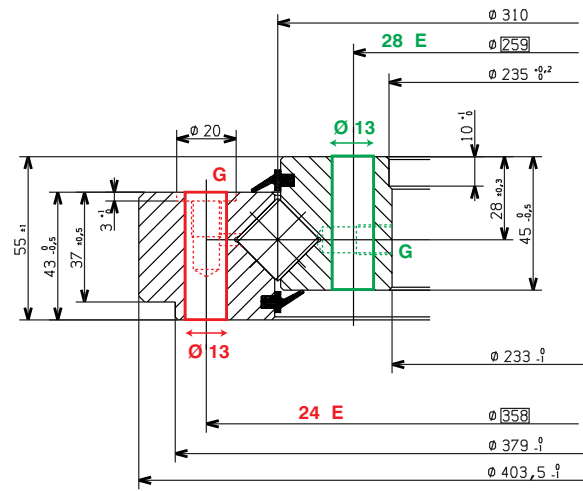
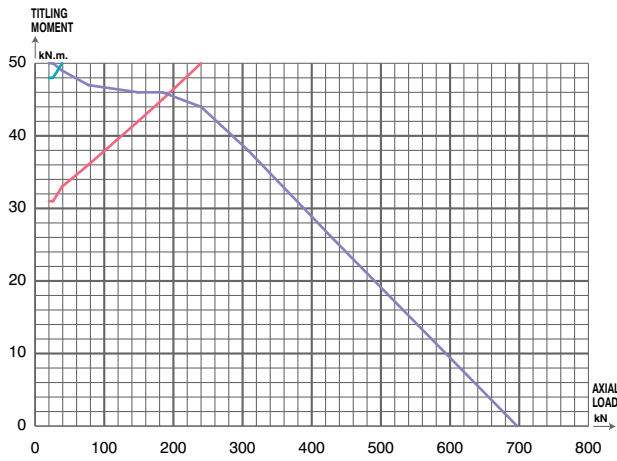
RKS.313500404001



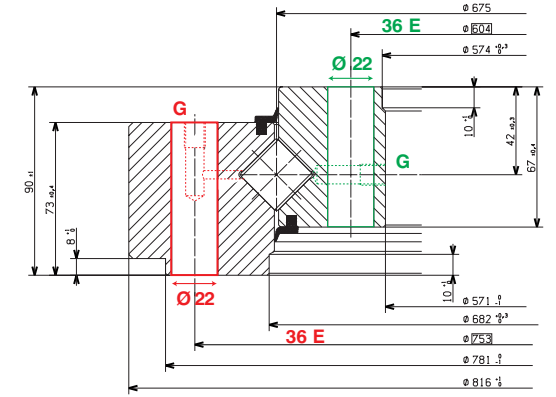
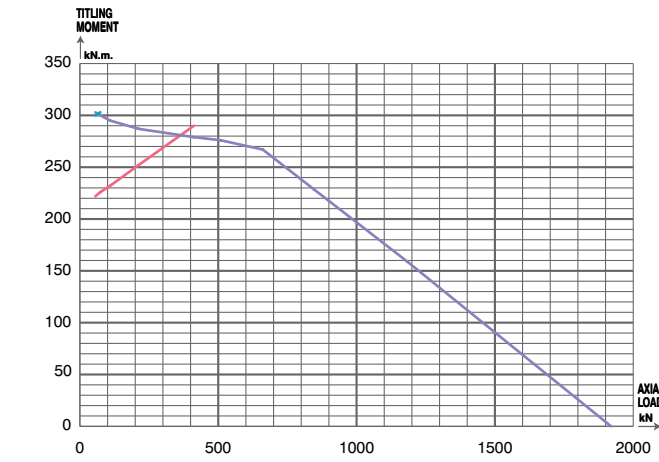
RKS.512080101001



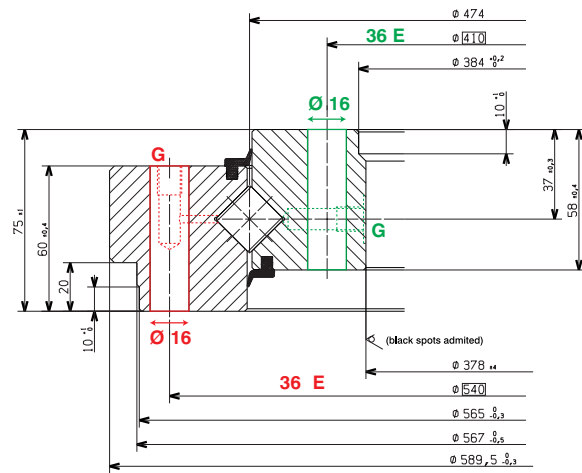
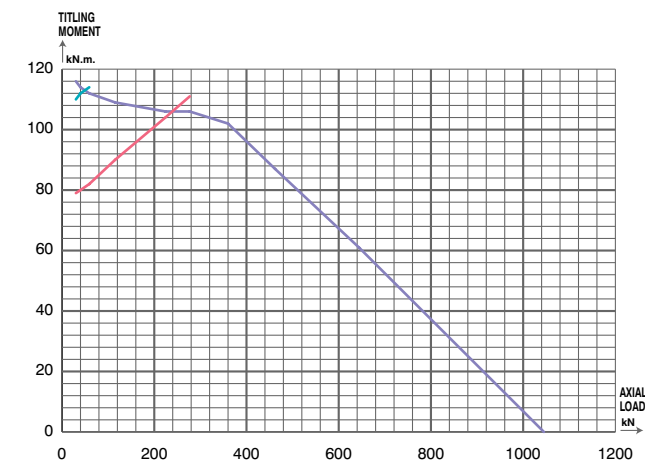
RKS.921155203001



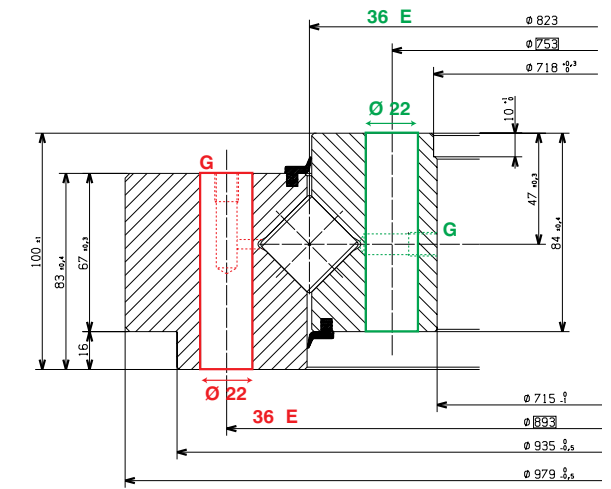
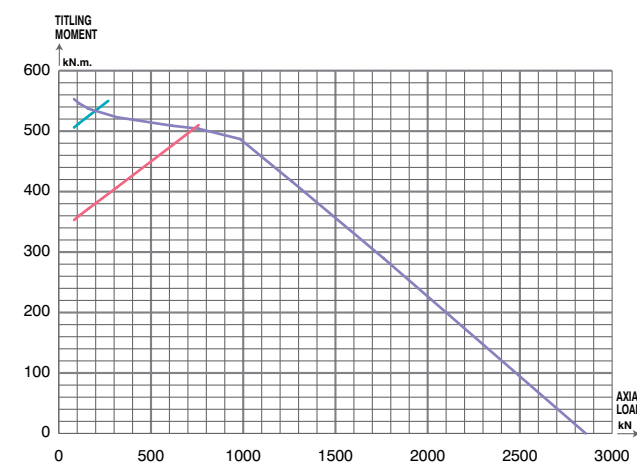
RKS.122295101002



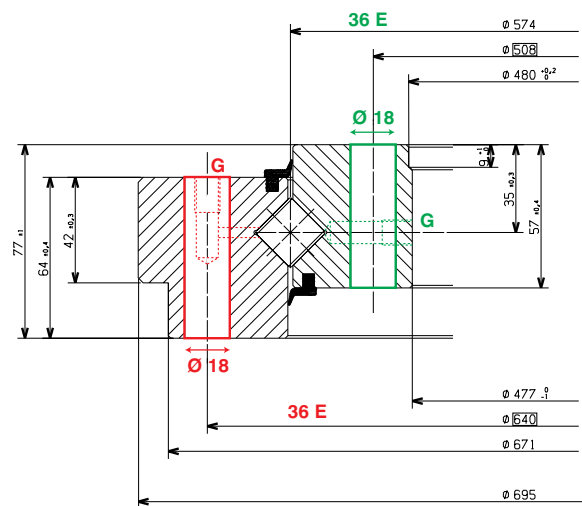
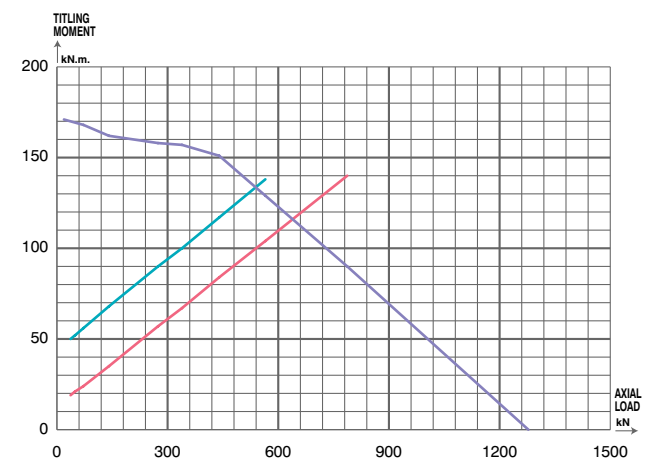
RKS.121405101002



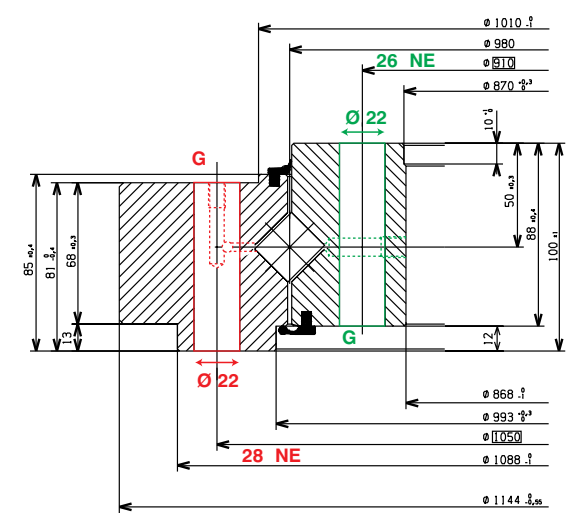
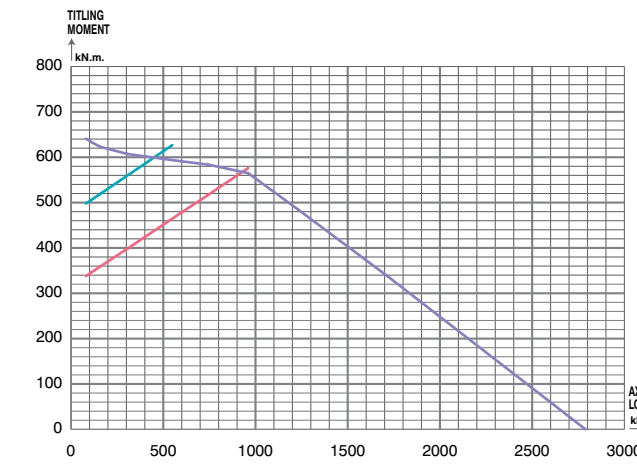
RKS.223475101001



RKS.121395101002



RKS.222605101001



© Copyright SKF 2003

The contents of this publication are the copyright of the publisher and may not be reproduced (even extracts) unless permission is granted. Every care has been taken to ensure the accuracy of the information contained in this publication but no liability can be accepted for any loss or damage whether direct, indirect or consequential arising out of the use of the information contained herein.

Please note that the products included in this catalogue do not represent our complete range and that new items may be added in the future.

Publication 4031 / E
Reg. 471 8 - 2003/06

Produced in France by Synergence.