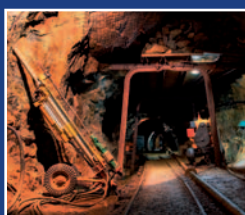


# > Power Team

HYDRAULIC PUMPS | CYLINDERS | JACKS | PULLERS | TOOLS

Heavy duty grade high force hydraulic products, systems and tools











This catalog reflects our most used products. Please refer to our full line catalog for the complete range.

## Locking Collar [R..L-series]

Single-acting | Load return

### Push, mechanical load holding

- Positive mechanical lock to support load
- Support lifted load for extended periods of time with hydraulic pressure released



Force tons	Stroke mm.	Order No.	Oil Cap cc.	Retracted Height mm.	Weight kg.
55	50,8	R552L	362	161,9	15,3
55	152,4	R556L	1.087	263,5	26,3
55	254,8	R5510L	1.811	365,1	36,3
100	50,8	R1002L	677	184,2	30,0
100	152,4	R1006L	2.030	285,8	46,8
100	254,8	R10010L	3.383	387,4	64,5
150	50,8	R1502L	1.007	206,4	53,0
150	152,4	R1506L	3.019	308,9	80,4
200	254,8	R2002L	1.355	241,3	83,1
200	50,8	R2006L	4.062	342,9	117,6
280	152,4	R2802L	1.861	247,7	118,5
280	254,8	R2806L	5.583	349,3	163,0
280	50,8	R28010L	9.305	450,9	208,1
355	152,4	R3552L	2.326	292,1	173,0
355	254,8	R3556L	6.975	393,7	232,5
430	50,8	R4302L	2.841	333,4	252,4
430	152,4	R4306L	8.520	435,0	329,2
430	254,8	R4310L	14.201	536,6	405,9
565	50,8	R5652L	3.710	371,2	368,2
565	152,4	R5656L	11.129	473,1	468,0
565	254,8	R56510L	18.548	574,7	568,0

## Locking Collar [RA..L-series]

Single-acting | Spring return

### When portability is a key factor

- Half the weight of steel cylinders
- Support lifted load for extended periods of time with hydraulic pressure released



Force tons	Stroke mm.	Order No.	Oil Cap cc.	Retracted Height mm.	Weight kg.
55	155,5	RA556L	1.109	317,5	13,4
100	158,8	RA1006L	2.116	339,7	29,1

## Swivel Caps [For use with cylinders]

### Reduce the effect of off center loading

- Tilts up to 5 degrees
- Radial grooves on top of cap reduce load slippage



For use with cylinders	Order No.	Force tons	Weight kg.
RC740°C + RC965°C	2000824	740-965	72
RC1220°C + ..D + ..L	2000825	1220	113
RC740*D	2000822	740	19
RC965*D	2000823	965	40
RC740*L + RC965*L	2000824	740-965	72
RL*	420866	55-100	1
RC* + RL*	420867	150-200	4
RC* + RL*	420868	280	6
RC* + RL*	420869	355	17
RC* + RL*	420870	435	24
RC* + RL*	420871	565	35

## Locking Collar [RC..L-series]

Single-acting | Load return

### Push, mechanical load holding

- Positive mechanical lock to support load



Force tons	Stroke mm.	Order No.	Oil Cap cc.	Retracted Height mm.	Weight kg.
740	50	RC7402L	4.811	395	545
740	150	RC7406L	14.432	495	683
740	250	RC74010L	24.053	595	821
965	50	RC9652L	6.280	455	714
965	150	RC9656L	18.849	555	990
965	250	RC96510L	31.400	635	1.170
1220	50	RC12202L	7.949	443	969
1220	150	RC12206L	23.857	598	1.310
1220	250	RC122010L	39.741	698	1.530



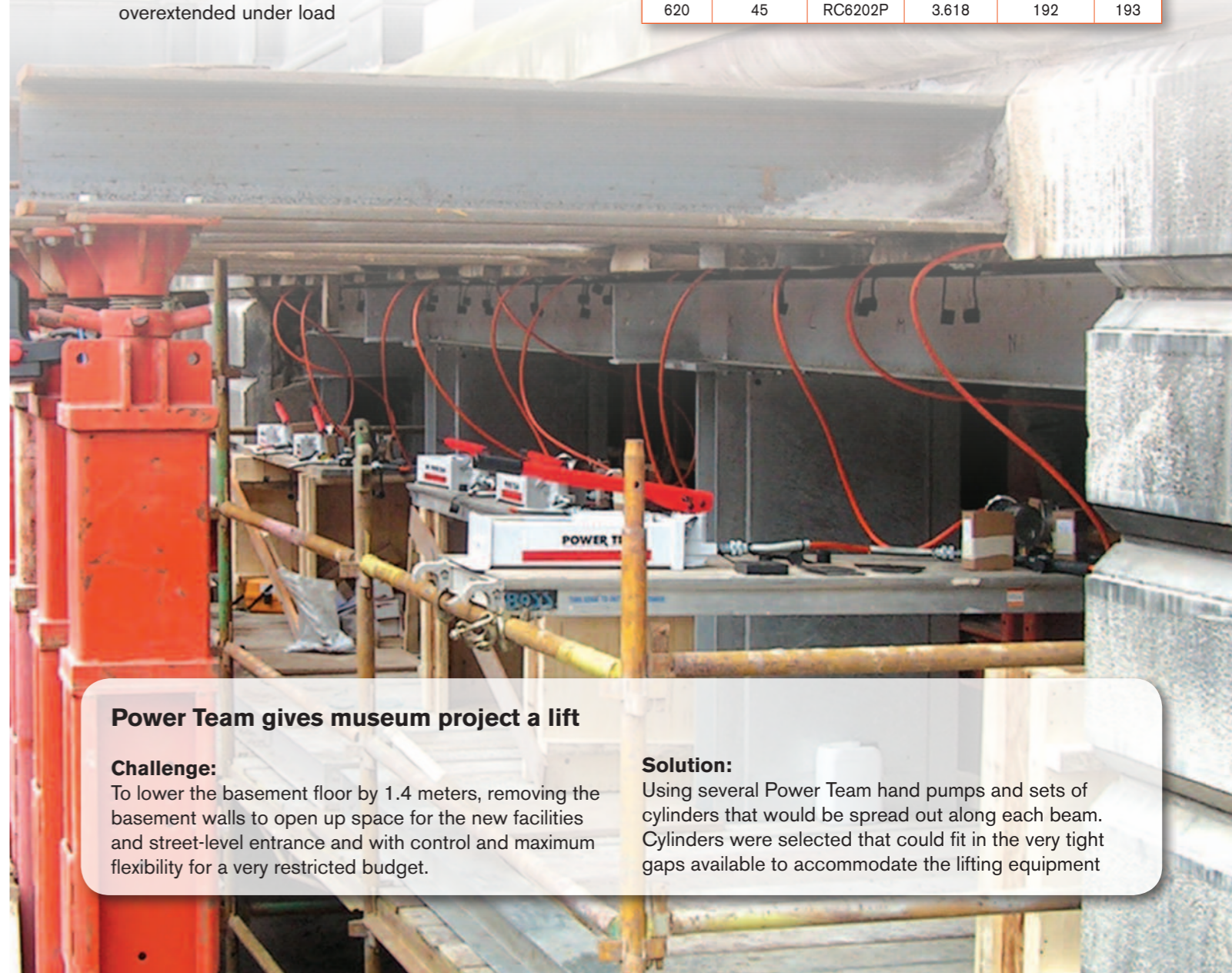
## Pancake Locking Collar [RC..P-series]

Single-acting | Load return

### For use where space is limited

- Support lifted load for extended periods of time with hydraulic pressure released
- Overflow port prevents piston from being overextended under load

Force tons	Stroke mm.	Order No.	Oil Cap cc.	Retracted Height mm.	Weight kg.
55	50	RC0552P	355	125	11
100	45	RC1002P	597	137	22
155	45	RC1552P	905	148	39
240	45	RC2402P	1.413	155	59
380	45	RC3802P	2.208	178	110
620	45	RC6202P	3.618	192	193



### Power Team gives museum project a lift

#### Challenge:

To lower the basement floor by 1.4 meters, removing the basement walls to open up space for the new facilities and street-level entrance and with control and maximum flexibility for a very restricted budget.

#### Solution:

Using several Power Team hand pumps and sets of cylinders that would be spread out along each beam. Cylinders were selected that could fit in the very tight gaps available to accommodate the lifting equipment



For use with single acting cylinders

For use with double acting cylinders

## Electric/Battery Pump [PR10-series] Two speed

High performance in compact package

- Portable power source for hydraulic cylinders and tools
- Models have 2,4m power cord with alligator clips to connect to any 12 volt battery



1st l./min.	2nd l./min.	Oil Cap. liters	12V DC-uni Function	Tank	Order No.	Kg incl. oil
1.9	0.2	1	Autodump	Poly	PR102A	9
1.9	0.2	1	Adv-Hold Return	Poly	PR102	9
3.9	0.3	5	Adv-Hold Return	Poly	PE172DC	23

1st l./min.	2nd l./min.	Oil Cap. liters	Contr.	Function	Tank	Order No.	Kg incl. oil
1.9	0.2	1	Man.	Adv-Hold Return	Poly	PR104	9
3.9	0.3	5	Man.	Adv-Hold Return	Poly	PE174DC	23

## Electric Pump [PE17-series] Two speed

For maintenance and construction applications

- Extremely quiet noise level (67-81 sBA)
- For maintenance and construction applications



1st l./min.	2nd l./min.	Oil Cap. liters	Contr.	Function	Tank	Order No.	Kg incl. oil
3.9	0.2	6	Man.	Autom. Return	Metal	PE172AM-E220	24
3.9	0.2	5	Man.	Autom. Return	Poly	PE172A-E220	20
3.9	0.2	6	Man.	Adv-Hold Return	Metal	PE172M-E220	24
3.9	0.2	5	Man.	Adv-Hold Return	Poly	PE172-E220	20
3.9	0.2	6	Sol.	Adv-Hold Return	Metal	PE172SM-E220	24
3.9	0.2	5	Sol.	Adv-Hold Return	Poly	PE172S-E220	20

1st l./min.	2nd l./min.	Oil Cap. liters	Contr.	Function	Tank	Order No.	Kg incl. oil
3.9	0.2	5	Man.	Adv-Hold Return	Poly	PE174-E220	20
3.9	0.2	6	Man.	Adv-Hold Return	Metal	PE174M-E220	24

## Electric Pump [PE30-series] Two speed

Ideal for maintenance and construction applications

- Starts under full load even when voltage is reduced to 50% of nominal rating



1st l./min.	2nd l./min.	Oil Cap. liters	Contr.	Function	Tank	Order No.	Kg incl. oil
5	0.5	3.5	Man.	Auto Dump	Alum	PE302A-E220	19
5	0.5	5.5	Man. Switch	Adv-Hold Return	Alum	PE302-E220	19
5	0.5	3.5	Man. Switch	Adv-Hold Return	Alum	PE303-E220	19
5	0.5	3.5	Man.	Adv-Hold Return	Alum	PE303R-E220	19
5	0.5	3.5	Sol.	Adv-Hold Return	Alum	PE302S-E220	19
5	0.5	3.5	Man.	Adv-Hold Return	Alum	PE302R-E220	19
5	0.5	6	Man.	Adv-Hold Return	Alum	PE303R-2-E220	22
5	0.5	6	Man.	Auto dump	Alum	PE302A-2-E220	22
5	0.5	6	Man. Switch	Adv-Hold Return	Alum	PE302-2-E220	22
5	0.5	6	Man. Switch	Adv-Hold Return	Alum	PE303-2-E220	22
5	0.5	6	Sol.	Adv-Hold Return	Alum	PE302S-2-E220	22

1st l./min.	2nd l./min.	Oil Cap. liters	Contr.	Function	Tank	Order No.	Kg incl. oil
5.0	0.5	3.5	Man.	Adv-Hold Return	Alum	PE304R-E220	19
5.0	0.5	3.5	Man. Switch	Adv-Hold Return	Alum	PE304-E220	19
5.0	0.5	6	Man.	Adv-Hold Return	Alum	PE304R-2-E220	22
5.0	0.5	6	Man. Switch	Adv-Hold Return	Alum	PE304-2-E220	22

For use with single acting cylinders

For use with double acting cylinders

## Electric Pump [PE46-series] Two speed

Ideal for indoor maintenance and production applications

- 24 volt control circuit on all units with remote control
- Best suited for indoor maintenance and production applications



1st l./min.	2nd l./min.	Oil Cap. liters	Contr.	Function	Tank	Order No.	Kg incl. oil
6.7	0.6	9.5	Man.	Adv-Hold Return	Metal	PE462-E220	36
6.7	0.6	9.5	Sol.	Adv-Hold Return	Metal	PE462S-E220	36
6.7	0.6	9.5	Man.	Auto dump	Metal	PE462A-E220	36

1st l./min.	2nd l./min.	Oil Cap. liters	Contr.	Function	Tank	Order No.	Kg incl. oil
6.7	0.6	10	Man.	Adv-Hold Return	Metal	PE464-E220	36
6.7	0.6	10	Sol.	Adv-Hold Return	Metal	PE464S-E220	36

## Electric Pump [PE55-series] Two speed

Heavy duty multiple-applications pump

- Heavy construction and concrete stressing
- Low voltage starting possible



1st l./min.	2nd l./min.	Oil Cap. liters	Contr.	Function	Tank	Order No.	Kg incl. oil
11.3	0.9	8.5	Man.	Adv-Hold Return	Metal	PE552-E220	30
11.3	0.9	8.5	Man.	Auto dump	Metal	PE552A-E220	30
11.3	0.9	8.5	Man.	Adv-Hold Return	Metal	PE553-E220	30
11.3	0.9	8.5	Sol.	Adv-Hold Return	Metal	PE552S-E220	30

1st l./min.	2nd l./min.	Oil Cap. liters	Contr.	Function	Tank	Order No.	Kg incl. oil
11.3	0.9	9	Man.	Adv-Hold Return	Metal	PE554-E220	30
11.3	0.9	9	Sol.	Adv-Hold Return	Metal	PE554S-E220	30

## Electric Pump [PQ120-series] Up to 400 ton 1,6 l/min

Ideal for press operation

- Low speed, high torque pump designed specifically for heavy duty, extended cycle operation, ideal for pressing



1st l./min.	2nd l./min.	Oil Cap. liters	Contr.	Function	Tank	Order No.	Kg incl. oil
9.7	1.6	20	Man.	Adv-Hold Return	Metal	PQ1203-E380	75
9.7	1.6	20	Sol.	Adv-Hold Return	Metal	PQ1203S-E380	75

1st l./min.	2nd l./min.	Oil Cap. liters	Contr.	Function	Tank	Order No.	Kg incl. oil
9.7	1.6	20	Man.	Adv-Hold Return	Metal	PQ1204-E380	75
9.7	1.6	20	Sol.	Adv-Hold Return	Metal	PQ1204S-E380	75



## Electric Pump [PE400-series] Two speed / up to 1000 ton 5,6 l/min

Single or multiple cylinder applications

- Low noise level of 73-80 dBA



1st l./min.	2nd l./min.	Oil Cap. liters	Contr.	Function	Tank	Order No.	Kg incl. oil
16	5.6	63	Man.	Adv-Hold Return	Metal	PE4004-E380	223
16	5.6	63	Sol.	Adv-Hold Return	Metal	PE4004S-E380	230



## Hydraulic Spreaders

Spring-return | Retract automatically

Use to lift machines or as a clamp

- It is a hydraulic pry bar
- Spread concrete forms or rebar or perform straightening jobs



Capacity tons	Order No.	Min. Clearance Required mm.	Max. Spread mm.	Oil cc.	Weight kg.
1 ton	HS2000	14,2	101	4	2,2
1,5 ton	HS3000	30,2	292	20	10

## Pipe Flange

Hydraulic Spreaders

No more "hammer and chisel" methods

- Flange spreaders should be used in pairs to provide an even spreading force



Capacity tons	Order No.	Standard Wedge Type	Weight kg.
5	HFS3A	60° Sharp	4,1
10	HFS6A	60° Sharp	8,2

## Nut splitter

Single-acting | Spring-return

Removal of seized and corroded nuts

- Specially designed tool steel cutter blade penetrates the nut to the precise point where it cracks, stopping short of the bolt threads



Capacity tons	Order No.		Class			
			#5	#9	#10	#12
15 ton	HNS150	Bolt Size Max	24	24	22	19
		Nut Thickness	32	21	26	19
	HNS150A	Bolt Size Max	24	24	22	19
		Nut Thickness	24	21	26	19
25 ton	HNS225	Bolt Size Max	36	36	30	29
		Nut Thickness	34	30	25	21

## Hydraulic Tester

Measure oil flow, pressure and temperature

Tests pump condition without removing pump from system. Max. 350 bar

- Temperature and flow readings are in metric and english, accurate to within ± 2% of full scale.
- Automatic pressure compensating feature lets you increase flow without affecting pressure setting



Order No.	Max Flow l./Min.	Flow Range l./Min.	Pressure Max	Weight kg.
HT50A	200	20-200	345	16,8
HT75	300	50-300	345	8,6
HT200	750	100-750	345	13,6

## Inflatable Jacks

The Load Lifting Alternative

Ideal for structure moving, rescue work, lifting round tanks, maintaining pipelines and countless other tasks.

- Large surface area and material flexibility allow jacks to lift loads on soft or compressible surfaces without support cribbing being necessary



Lifting Cap. tons	Lifting Height mm.	Order No.	Air Contents at 8 bar l.	Max. Working Pressure bar	Length mm.	Width mm.	Collapsed Height mm.	Weight kg.
1,1	70	IJ13	2,3	8	140	130	25,4	0,5
3,6	120	IJ45	14,4	8	255	200	25,4	1,2
7	160	IJ76	42	8	305	305	25,4	1,9
12	225	IJ128	97	8	400	400	25,4	3,6
23,8	304	IJ2211	268	8	550	550	25,4	7,3
34	360	IJ3213	463	8	650	650	25,4	9,9
46,3	418	IJ4416	729	8	750	750	25,4	13,1
74,6	520	IJ7320	1.457	8	950	950	30,4	26,3

## Hoses

Polyurethane | Rubber

4:1 safety factor

- All have plastic hose guards except for the 1/4" I.D. polyurethane hoses which have spring guards
- 3/8" NPTF fittings on both ends
- Other hose lengths available



Hose I.D.	Length	Poly Order No.	Rubber Order No.
6,4 mm	0,6 m	9765E	
6,4 mm	0,9 m	9766E	9755E
6,4 mm	1,8 m	9767E	9756E
6,4 mm	2,4 m	9768E	9757E
6,4 mm	3,1 m	9769E	9758E
6,4 mm	3,7 m	9770E	9759E
6,4 mm	6,1 m	9771E	9760E
9,5 mm High Flow	1,8 m	9780E	9776E
9,5 mm High Flow	3,1 m	9781E	9777E
9,5 mm High Flow	6,1 m	9782E	9778E
9,5 mm High Flow	15,3 m	9759E	9735E

## Couplers

Standard & Flush-Face

- Complete quick coupler, 3/8" NPTF (includes two 9800 dust caps) Ordernr 9795



- Male (hose) half coupler, 3/8" NPTF Ordernr 9798



- Female (cylinder) half coupler with No. 9800 dust cap, 3/8" NPTF Ordernr 9796



## Gauges

Analogue | Digital

- Gauges feature an easily readable and highly visible, red day-glo needle
- High strength steel bourdon tube ensures high cycle life



Face Dia. Graduations	Bar	Use with Cylinder Series	Gauge No.
63,5 mm	0-700	All	9040E
100 mm	0-700	All	9052E
<b>Tons</b>			
100 mm	0-175, 0-30 and 0-50	RT172, RT302, RT503	9059E
100 mm	0-5	C & RLS	9053E
100 mm	0-10	C, RD, RH, RLS & RSS	9055E
100 mm	0-25	C & RD	9063E
100 mm	0-30	RH, RLS & RSS	9065E
100 mm	0-50	RH+, RLS & RSS	9067E
100 mm	0-55	C, R, RA & RD	9069E
100 mm	0-60	RH	9071E
100 mm	0-75	C, RLS & RD8013	9073E
100 mm	0-100	C, R, RA, RD, RH, RLS, RSS & RT1004	9075E
100 mm	0-150	C, R, RD & RLS	9077E
100 mm	0-200	R, RD & RH	9079E

## Fluids for high pressure

Standard, Flame Out, Biodegradable and Low Temp

- Prevents pump cavitation, additives prevent rust, oxidation and sludge



Oil Description	Quantity	Order No.
Standard Oil	0,9 l	9636
Standard Oil	3,8 l	9637
Standard Oil	9,5 l	9638
Standard Oil	208 l	9616
Flame-Out®	3,8 l	9639
Flame-Out®	9,5 l	9640
Biodegradable	3,8 l	9645
Biodegradable	9,5 l	9646
Low Temp.	3,8 l	9647





## Manifolds

### Remote and Pump mounted

- **Manifold with two needle valves for control of two cylinders, has four 3/8" NPTF ports**  
Ordernr 9642
- **Manifold with four needle valves for control of four cylinders, has six 3/8" NPTF ports**  
Ordernr 9644



## Fittings

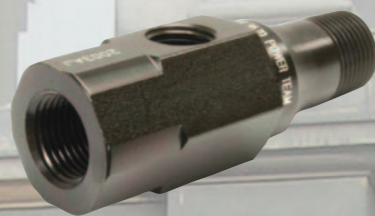
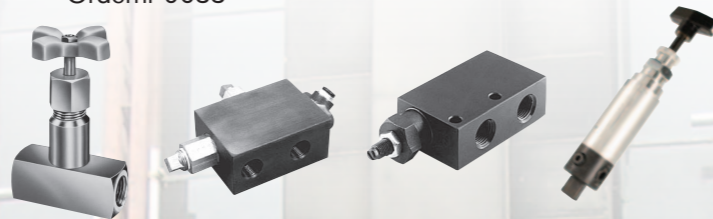
### For all applications

Order No.		
9670		<b>Tee adapter</b> 1/4" and 3/8" NPTF female and 3/8" NPTF male ports
9675		<b>Swivel connector</b> 3/8" NPTF male, 3/8" NPSM female
9678		<b>45° fitting</b> 1/4" NPTF male and female ends
9680		<b>Coupling</b> both ends 3/8" NPTF female
9681		<b>Street elbow</b> 3/8" NPTF male and female ends
9682		<b>Male connector</b> 3/8" NPTF male ends
9683		<b>Male connector</b> 3/8" NPTF male ends

## Valves

### All valves are painted, coated or plated for corrosion resistance

- **Shut off valve with 3/8" NPTF ports**  
Ordernr 9575
- **Pilot operated check valve with 3/8" NPTF ports**  
Ordernr 9581
- **Pressure relief valve with 3/8" NPTF ports**  
Ordernr 9623
- **In-line pressure regulator valve with two 3/8" NPTF inlet ports, one 1/8" NPTF tank port and 1m drain line kit**  
Ordernr 9633



## Bottle Jacks

### Low Profile

### The right choice for lower clearance jobs

- All jacks operate both vertically and horizontally for use in a variety of lifting, pushing, and spreading applications



Force tons	Stroke mm.	Order No.	Retracted height min. mm.	Metric tons at 700 bar	Weight kg.
12	95	9012A	171	10,9	6,4
20	86	9020A	181	18,1	10,1
30	79	9130A	181	27,2	13,7

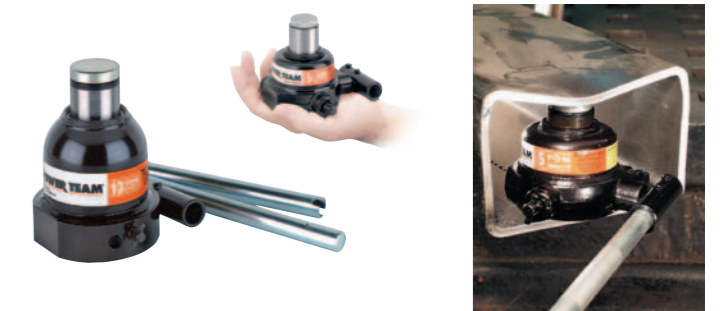


## Sidewinder Jacks

### Mini Jacks

### Compact, fits in your palm

- The perfect addition to any toolbox, this remarkable little jack has multiple uses that are limited only by your imagination
- Use it as a jack or a spreader, and use it vertically or horizontally in limited clearance



Force tons	Stroke mm.	Order No.	Retracted height min. mm.	Metric tons at 700 bar	Weight kg.
5	19	9105A	63,5	4,5	1,9
5	38	9205A	88,9	4,5	2,4
10	30	9210A	120,7	9,1	5,5
20	30	9220A	130,2	18,1	8,0

## Hydra grip-o-matic

### Use with 2/3 jaw pullers

### A self contained pulling system in a compact package

- The harder the pulling force, the tighter the jaws grip for secure holding force
- Easily metered release valve control knob



Cyl. Cap. tons	Order No.	Reach Jaws mm.	Spread Jaws mm.	Stroke mm.	Weight kg.
6	PH63C	152	200	80	4,9
8	PH83C	190	249	80	6,6
11	PH113C	229	280	80	8,0
30	PH303C	375	540	110	32,3
8	PH82K	207	245	80	9,5
11	HST11S	150	102-410	80	14,5

## Hydraulic Presses

All presses available in CE

**Application: Maintenance workshop, factory, school, test lab, etc.**

Type: Bench, floor and C-frame



Tons	Model	Pump Type	Cylinder Type	Order No.	Weight kg.	Pump Code
10 tons	Bench	Hand	Single-acting	SPM1010	41	P55
	Floor	Air	Single-acting	SP1010A	78	PA9
	Floor	Electric	Single-acting	SPE1010-E220	79	PE172-E220
	Floor	Hand	Single-acting	SPH1010	77	P55
	Floor	Electric	Double-acting	SPE1010D-E220	87	PE174-E220
25 tons	Bench	Hand	Single-acting	SPM256C	109	P59
	Floor	Air	Single-acting	SPA256	197	PA6
	Floor	Electric	Single-acting	SPE256-E220	210	PE172-E220
	Floor	Hand	Single-acting	SPM256	205	P59
	Floor	Air	Single-acting	SPA2514	310	PA6
	Floor	Hand	Single-acting	SPM2514	315	P159
	Floor	Electric	Single-acting	SPE2514-E220	300	PE172-E220
	Floor	Electric+Sol Valve	Single-acting	SPE2514S-E220	345	PE172S-E220
	Floor	Electric	Double-acting	SPE2514DS-E220	360	PE174S-E220
55 tons	Floor	Air	Single-acting	SPA556	320	PA6
	Floor	Hand	Single-acting	SPM556	325	P159
	Floor	Electric	Single-acting	SPE556-E220	333	PE172-E220
	Floor	Hand	Single-acting	SPM5513	435	P460
	Floor	Electric	Single-acting	SPE5513-E220	444	PE172-E220
	Floor	Electric+Sol Valve	Single-acting	SPE5513S-E220	480	PE172S-E220
	Floor	Electric	Double-acting	SPE5513D-E220	450	PE174-E220
	Floor	Electric+Sol Valve	Double-acting	SPE5513DS-E220	505	PE554S-E220
100 tons	Floor	Hand	Single-acting	SPM10010	770	P460
	Floor	Electric	Single-acting	SPE10010-E220	813	PE552-E220
	Floor	Electric	Single-acting	SPE10010R-E220	766	PE172-E220
	Floor	Electric	Double-acting	SPE10013DS	854	PQ1204S-E380

## Professional Hydraulic Bolting Solutions

Our SPX Series of torque wrenches includes both Square Drive and Low Clearance wrenches. The steel body design provides a compact tool that can be used in the most inaccessible bolting areas found in the industry. Each component on the tools has been optimized to minimize weight without sacrificing strength and durability, using steel alloy, high strength titanium and aluminum. Tools utilize a high grade nickel plated finish, making them suitable for sub-sea application in a salt water environment.

Our SPX Series of hydraulic electric and air pumps, the first constant horsepower pump or horsepower limiting pump in the portable hydraulic pump market.

What can torque wrench users expect? In a word.....SPEED.

Our SPX range is extended with bolt tensioners and nut splitters. The bolt tensioner range include manual return, spring return and quick reaction subsea bolt tensioners. Our new nut splitter offers a reliable and effective solution to the removal of seized and corroded nuts.

Calibration, training and software are also available.

Please ask for our folder in which you will find our complete offering of bolting products.

# SPX®



### Safety First

Proper training is needed to operate and maintain hydraulic equipment with safety and efficiency. Power Team offers classes to help you safely operate and maintain your tools.

### Safety Seminar

Workplace safety should be a high priority to assure high pressure hydraulic tools are used in accordance with recommended safety procedures. Power Team safety training seminars demonstrate the proper methods for operating high pressure hydraulic tools to avoid equipment damage and lost time accidents. Safety seminars can be conducted at the customer facility, the job site or at one of the SPX Hydraulic Technologies facilities.



**Safety First**



## Power

Power Team hydraulic pumps, bolting products and accessories offer on-site solutions to enable assembly of large wind turbines. Growth in traditional and renewable energy requires increasing infrastructure among local, regional and global communities. Power Team high performance, hydraulic tools and systems help make this possible.



## Maintenance & Production

Power Team hydraulic pumps, cylinders, mechanical tools and accessories offer in-plant solutions where heavy lifting, lowering, pulling, pushing, pressing, spreading and holding in position are required. Look to Power Team products for all of your difficult in-plant maintenance and production jobs.



## Construction

Power Team high performance hydraulic pumps and post-tensioning jacks offer on-site solutions for today's demanding construction requirements. Bridge construction and repair, commercial building construction, post-tensioning and stressing as well as structure jacking and positioning are served by rugged and portable Power Team products maintenance and production jobs.



## Energy, Oil & Gas

Power Team high performance hydraulic products are working behind the scene at power generation plants, ocean based oil platforms, floating platform systems and land based oil rigs. Big jobs requiring flange integrity or general rig maintenance are accomplished with the assistance of Power Team hydraulic pumps and tools.



## Mining

Power Team high performance hydraulic pumps, cylinders and accessories offer on-site maintenance solutions for critical mining equipment. Despite the nature of difficult and demanding mining environments, Power Team products continue to perform in a robust, safe and reliable manner.

# Power Team®

Albert Thijsstraat 12  
NL-6471 WX Eyselshoven  
Tel: +31 45 5678877  
Fax: +31 45 5678878  
Email: [infoeurope@powerteam.com](mailto:infoeurope@powerteam.com)

Your Power Team Distributor: